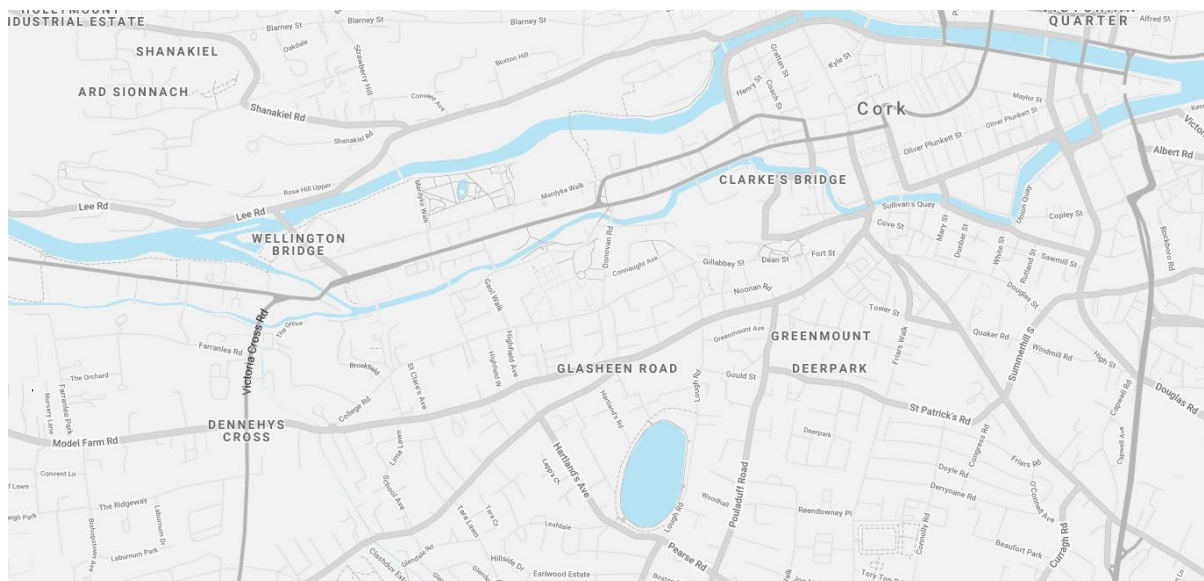


Bellmount Development Ltd.

Proposed Residential Development



Mobility Management Plan

July 2022



MHL & Associates Ltd.
Consulting Engineers





Document Control Sheet

Client	Bellmount Development Ltd.
Project Title	Proposed Residential Development
Project Location	Victoria Cross Road
Document Title	Mobility Management Plan
Document No.	MHL-21144TT-WILTONROAD-DOC01-MMP
Job No.	21144TT

Rev.	Status	Author	Reviewed By	Approved By	Date
-	Internal Draft	D. Murphy	-	-	25th- Nov -2021
A	External Draft	D. Murphy	D. Murphy	B. Murphy	03rd- Dec -2021
B	Client Draft Issue	D. Murphy	D. Murphy	B. Murphy	08th- Dec -2021
C	Client Issue	D. Murphy	D. Murphy	B. Murphy	08th- Jul -2022
D	Final Issue	D. Murphy	D. Murphy	B. Murphy	15th- Jul -2022

M.H.L. & Associates Ltd.

Consulting Engineers

Carraig Mór House,
10 High Street,
Douglas Road,
Cork.

Tel 021-4840214 Fax: 021-4840215

E-Mail: info@mhl.ie

Table of Contents

1	Introduction	3
1.1	Background	3
1.2	Objectives	4
2	Existing Site	6
2.1	Existing Public Transport Infrastructure	9
2.2	Existing Cycle Facilities	11
2.3	Existing Pedestrian Facilities	12
3	Proposed Development	13
3.1	Planning Application	13
4	Planned Infrastructural Improvements	15
4.1	Proposed Pedestrian and Cycle Improvements	15
4.2	Bus Connects	17
5	Proposed Mobility Management Initiatives	19
5.1	Mobility Manager	19
5.2	Role of the Mobility Manager	19
5.3	Pedestrians and Cyclists	19
5.4	Local Services and Taxis	20
5.5	Public Transport	20
5.6	Connectivity to Public Transport Hubs	21
5.7	Coordinating and implementing the plan	21
6	Key Recommendations	22
7	References	24
8	Appendix	25
9	Appendix A – Walking and Cycling Isochrome Maps	26
10	Appendix B – Local Bus Routes / Timetables	29
11	Appendix C – Bus Connects Cork	30
12	Appendix D – Cork City Development Plan Map	31
13	Appendix E – Draft CCDP 2022-2028	32

Table of Figures

Figure 1.1 Existing site location	3
Figure 1.2 Street view of the applicant's site (looking south)	3
Figure 2.1 Site Location	6
Figure 2.2 Site's proximity to the wider city area.	7
Figure 2.3 Pedestrian 30min walk (5minute isochrone interval).....	7
Figure 2.4 Cycling 15min duration (5minute isochrone interval)	8
Figure 2.5 Cycling 15min duration (5minute isochrone interval)	8
Figure 2.6 Site's proximity to nearby bus stops.....	9
Figure 2.7 Site's proximity to nearby bus stops (Transport for Ireland).	10
Figure 2.8 Existing 220No. Bus route.....	10
Figure 2.9 208No. Bus route.....	11
Figure 3.1 Proposed Development Site Layout- Ground Floor. (Butler\Cammoranesi)	13
Figure 3.2 Proposed Development Site Layout- Typical Ground Floor Plan. (Butler\Cammoranesi)	14
Figure 3.3 Proposed Development Site Elevation (Butler\Cammoranesi)	14
Figure 4.1 Cycle routes identified in the Cork Cycle Network Plan.....	16
Figure 4.2 Cork Cycle Network Plan – Cork Inter Urban Route Network.....	17
Figure 4.3 Bus Connects Routes Map - Cork Metropolitan Area Draft Transport Strategy	18
Figure 4.4 Bus Connects Routes Map near applicant's site	18
Figure 9.1 – Walking Isochrones. 15min cycling from site	26
Figure 9.2 – Cycling Isochrones. 30min walking from site	26
Figure 9.3 Public Transport Bus Stops within 10minutes walking range of applicant's site.....	27
Figure 9.4 Restaurant, Café, Pub locations within 30minutes walking range of applicant's site	27
Figure 9.5 Educational centres within 30minutes walking range of applicant's site.....	28
Figure 9.6 Boroughs of Cork City	28
Figure 12.1 – Bicycle Parking Requirements. Cork City Development Plan 2015-2021.....	31

Abbreviations

Mobility Management Plan	MMP
Strategic Housing Development	SHD
Munster Technological University	MTU
University College Cork	UCC
Cork University Hospital	CUH
Cork Metropolitan Area Draft Transport Strategy	CMATS
Transport for Ireland	TFI
Strategic Housing Development	SHD
Electricity Supply Board	ESB
National Transport Authority's	NTA
Cork City Council	CCC
Cork Metropolitan Area Draft Transport Strategy	CMATS
Cork Cycle Network Plan	CCNP

1 INTRODUCTION

1.1 Background

M.H.L. & Associates Ltd. Consulting Engineers have been engaged by McCutcheon Halley Planning Consultants on behalf of Bellmount Developments Ltd. to prepare a Mobility Management Plan (MMP) to supplement a SHD housing planning application process for a proposed student accommodation complex on an existing brown field site, located adjacent to Orchard Lane and directly opposite the Wilton Road junction with Farranlea Road. The site is currently unoccupied, formerly operating as a car sales site for Finbarr Galvin Ltd. The location is well served by public transport, along with pedestrian facilities readily available in the nearby vicinity.

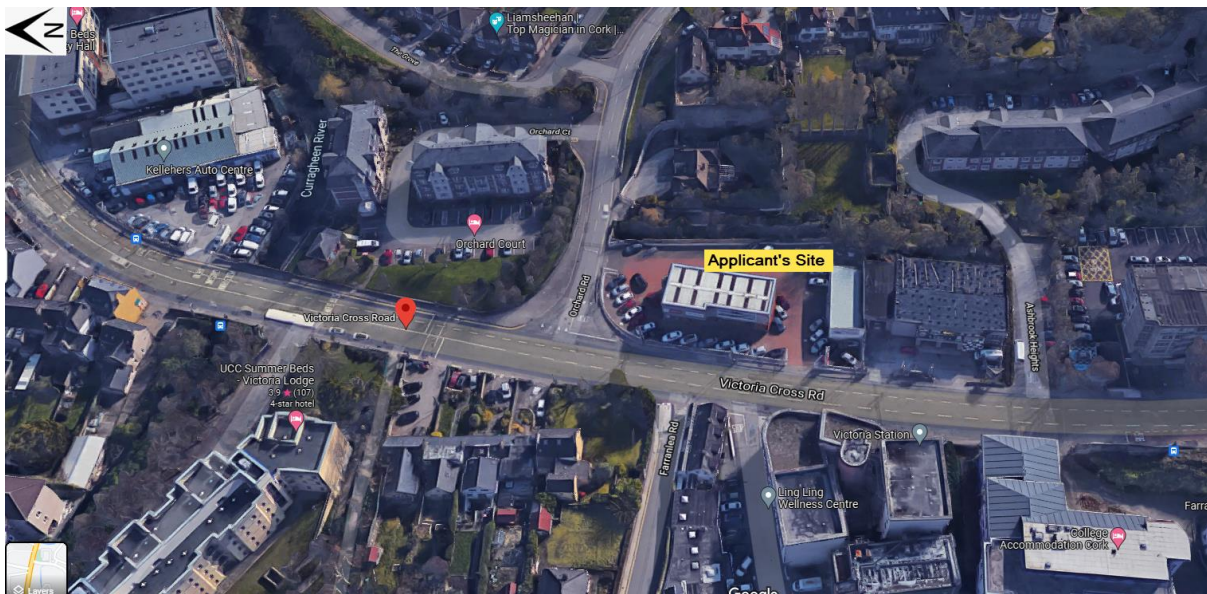


Figure 1.1 Existing site location



Figure 1.2 Street view of the applicant's site (looking south)

The planning submission is to consist of the proposed development is for a Strategic Housing Development:

- The demolition of existing structures on site; and
- The construction of 78no. student apartments consisting of 206 no. bed spaces(ranging in size from single bed studios to 8bed apartments), with common facilities, a reception area, management offices and storage and all associated ancillary development including plant and equipment, bin storage, landscaping, pedestrian access, and bicycle parking. The proposed development is six storeys in height.

It is proposed to provide cycle spaces number in line with best practice, as part of the application. The elimination of parking spaces aligns with an established trend to limit parking in urban apartment complexes. From a sustainable travel perspective, limiting vehicular parking spaces serves to force end users to adopt alternative travels modes, different to the single-occupant private car. This strategy supports national transport policy and with the objectives of the Cork City Development Plan 2015-2021. The following MMP sets out the proposed mobility management initiatives and measures to achieve modal split targets.

1.2 Objectives

This Mobility Management Plan has been prepared in accordance with the requirements of the Cork City Council Development Plan 2015-2021 which identifies the need for such a study. A mobility management plan is best described as a package of measures put in place to encourage and support sustainable travel patterns amongst the users of the proposed development. The aim is to reduce the demand and use of the private car and to highlight and facilitate the use of alternative modes of transport. The focus in this instance is:

- To inform residents of alternative modes of travel available to them for their journey.
- To promote healthier, stress-free, and cheaper travel for all commuters.
- To manage travel options including walking, scooting, cycling and public transport.
- To reduce trip generation to and from the site, thus eliminating parking demand and traffic generation. Thereby enhancing the environment, improving accessibility, and resulting in economic benefits to residents.

The MMP complies, where applicable, with the principles of "Smarter Travel – A Sustainable Transport Future 2009-2020". The primary action points have been reviewed and are proposed for the proposed development. The MMP also references the objectives of the "DTO Advice Note – Mobility Management Plans." The development of an MMP is an open-ended process whereby the compilation of this Plan is deemed to be the first step in its organic evolution. The plan should be developed by the end user and regularly reviewed and revised throughout operation. The appointment of an active Mobility Manager amongst staff members will be a central objective of the Plan. To facilitate the necessary modal split in our approach to commuting, residents will be required to

embrace the aspirations set out in this document. The complex should actively promote the use of alternative modes of travel through the management of travel plans, and involvement in a Mobility Plan Management. The staff will be required to participate in car-pooling, cycling, and walking and using public transport and taxis where practicable. The Government also has a role to play in changing current commuting practices. The provision of a better public transport system by fast tracking quality bus corridors, the provision of cycle lane facilities and the implementation of tax saver policies on commuter tickets are just some of the areas where the Government can play their part. There are many examples in other cities and towns around the world where the use of the car is penalised, be it a city centre roads tax or the taxing of car spaces as benefit in kind. Policies such as these may seem dramatic however they do have an overall benefit to the moving of goods and people within the city/town environ. The resulting savings to business and habitants can be significant as congestion and journey times reduce.

Smarter Travel Document "A Sustainable Transport Future" the document sets out the following aims by 2020:

To support sustainable travel, future population and employment growth will have to predominantly take place in sustainable compact urban areas or rural areas, which discourage dispersed development and long commuting.

Work-related commuting by car will be reduced from a current modal share of 65% to 45%, which will mean that between 500,000 and 600,000 commuters nationally will be encouraged to take means of transport other than car driver (of these 200,000 would be existing car drivers). Change in personal behaviour will also be necessary for other travel purposes as most travel relates to non-commuting.

Car drivers will be accommodated on other modes such as walking, cycling, public transport and car sharing (to the extent that commuting by these modes will rise to 55% by 2020) or through other measures such as e working.

The application proposed no on-site parking spaces which will serve to significantly reduce the site's traffic impact.

2 EXISTING SITE

The site is currently vacant, previously operating as a car show room. Figure 2.1 shows the site location proximity to Victoria Cross Junction and the nearby Dennehy's crossroad junction. These are busy urban routes, linking the site to Cork City, to the N40 south ring road and onwards to Carrigaline, Ballincollig, West Cork, etc. Locally the road network links the site to the southside of Cork City including Bishopstown Ballyphehane, Wilton, The Lough and Togher. The road is a single carriageway road. The site is currently accessed via two simple priority entrances on the Wilton Road.

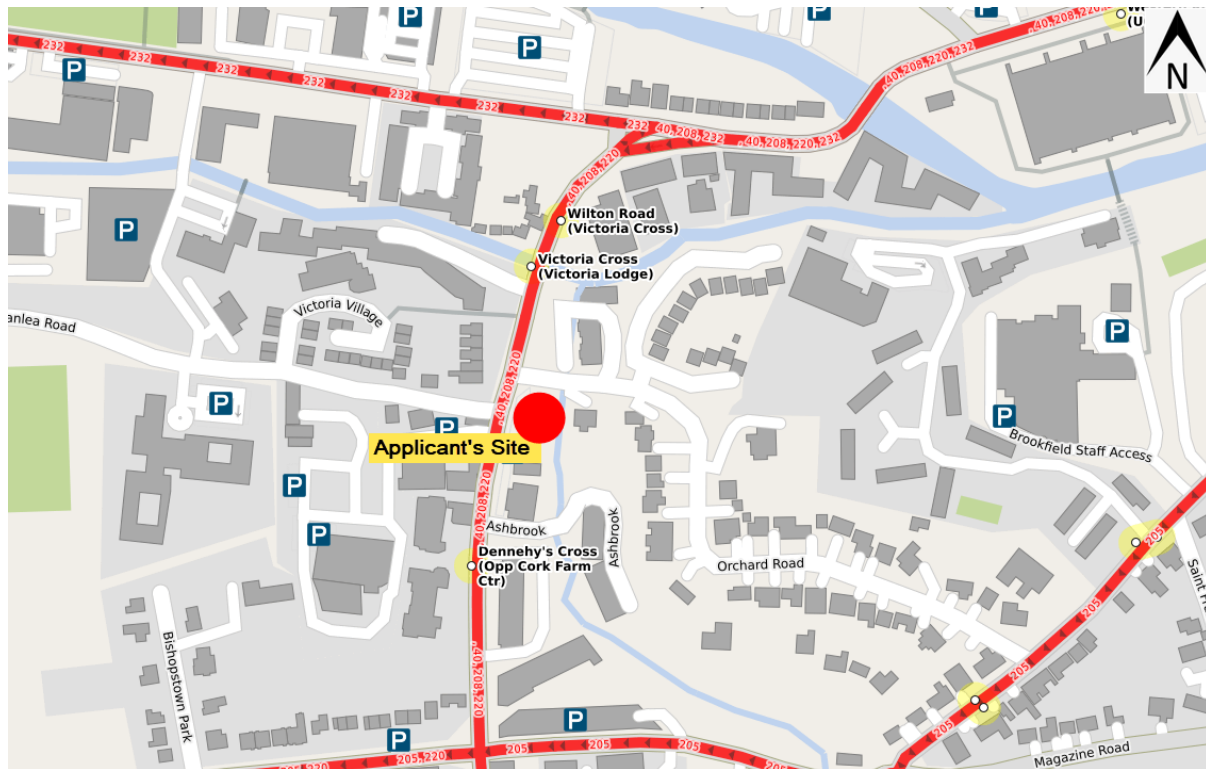


Figure 2.1 Site Location

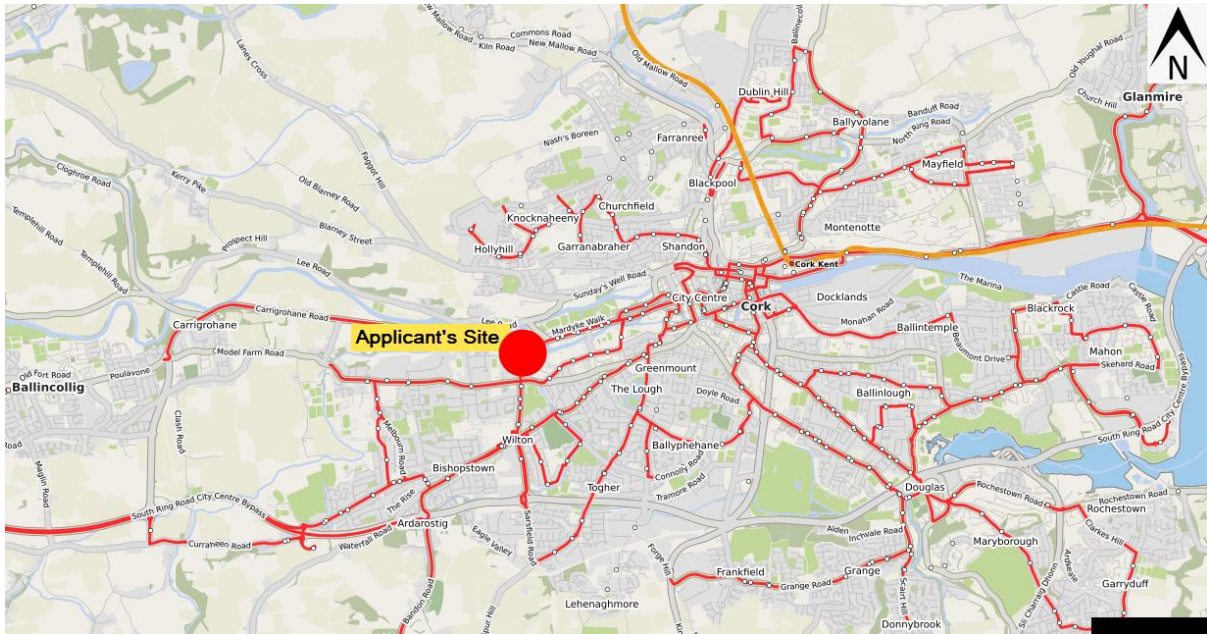


Figure 2.2 Site's proximity to the wider city area.

Figure 2.2 highlights the proximity of the site to the City Centre, Parnell Bus Station and Kent Train Station. It shows that majority of the city's amenities are within a walking and cycle distance of the site, as identified in the Cork City Development Plan. Furthermore, UCC campus grounds and Cork University Hospital are located on or within the 5km cycling radius. The provision of existing pedestrian and public transport facilities in the vicinity of the site also ensure that the uptake of sustainable travel modes can be realised

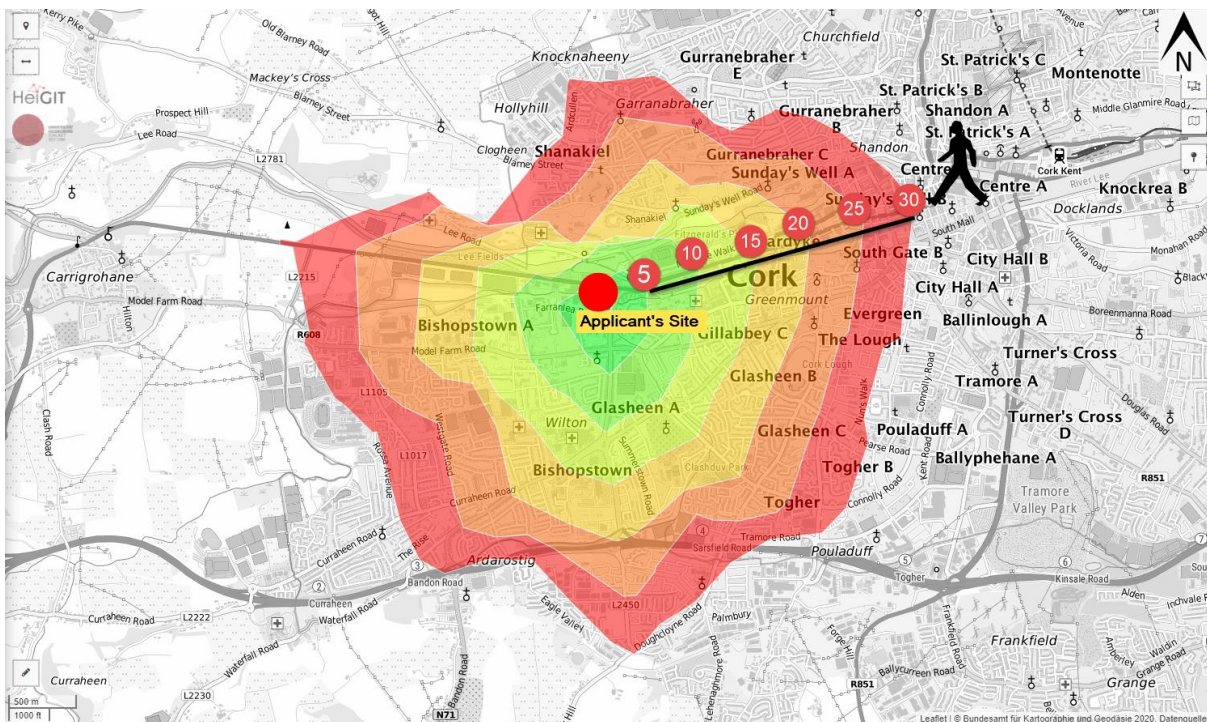


Figure 2.3 Pedestrian 30min walk (5minute isochrone interval)

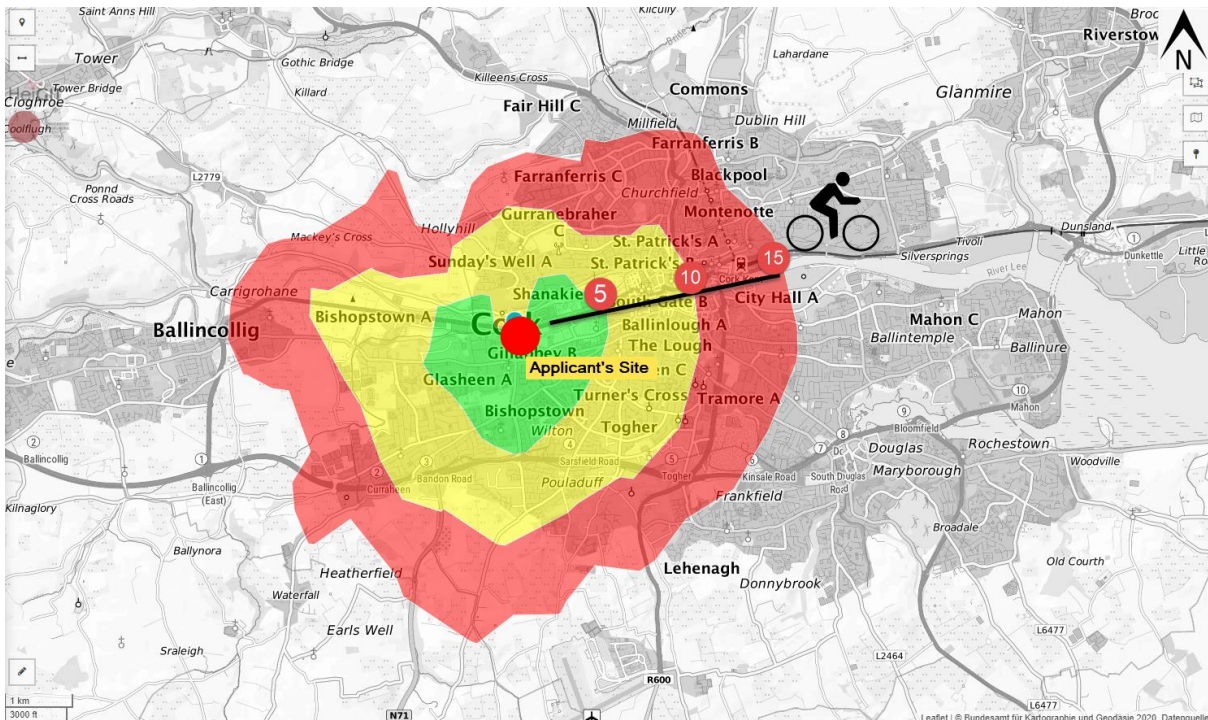


Figure 2.4 Cycling 15min duration (5minute isochrone interval)

Figure 2.3 highlights a 2km walking trip radius for the site location, with a 5km cycling radius also identified in Figure 2.4. The Cork City Development Plan 2015-2021 identifies walking as an appropriate “mode of transport for trips of 2km or less” and cycling as being “particularly targeted at trips of up to 5km (except where topography poses a significantly limiting factor)”. The topography varies to and from the site to the city centre but is not a limiting factor and would be suited to cycle trips. Please refer to Appendix E showing the applicant’s site location with reference to AECOM’s contour mapping which was produced for the Cork City Council’s Cycle Network Plan.

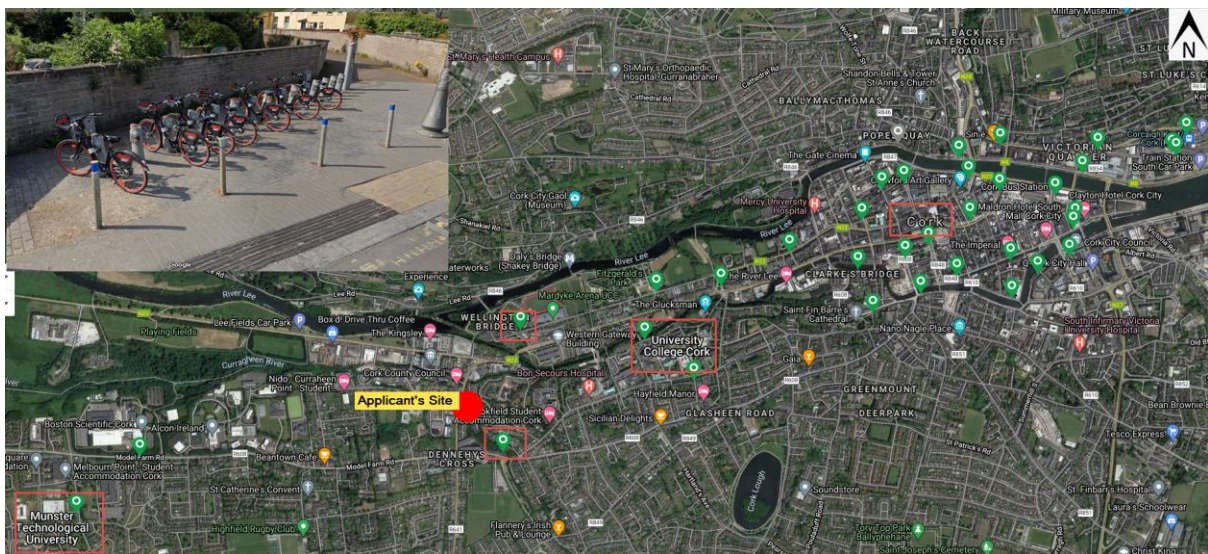


Figure 2.5 Cycling 15min duration (5minute isochrone interval)

Cork City’s Coca-Cola Zero® bike share service facilities are near the applicant’s site, with two nearby bike stands located on College Road and on The Mardyke. This self-

service bike rental service has with stations conveniently located through the city making it easy to get around, whether it is commuting to work & meetings or some sight-seeing. The rental service is available all year 7 days a week, from 5am to 12.30am.

2.1 Existing Public Transport Infrastructure

Existing public bus stops are located on either end of the applicant's site along Wilton Road. The development is c. 150m from these bus stops which serve the city area.

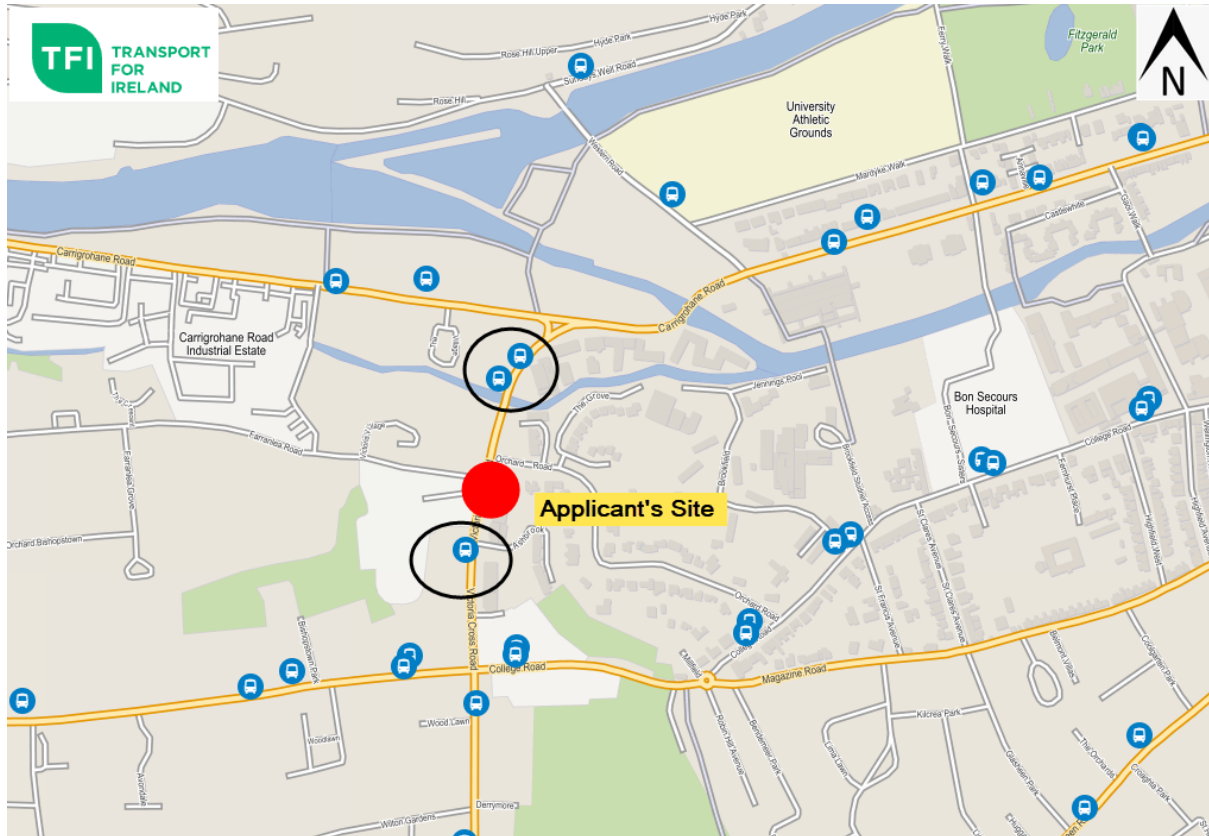


Figure 2.6 Site's proximity to nearby bus stops.

A schematic representation of the city bus services in the vicinity of the site and linking to the wider area is shown below.

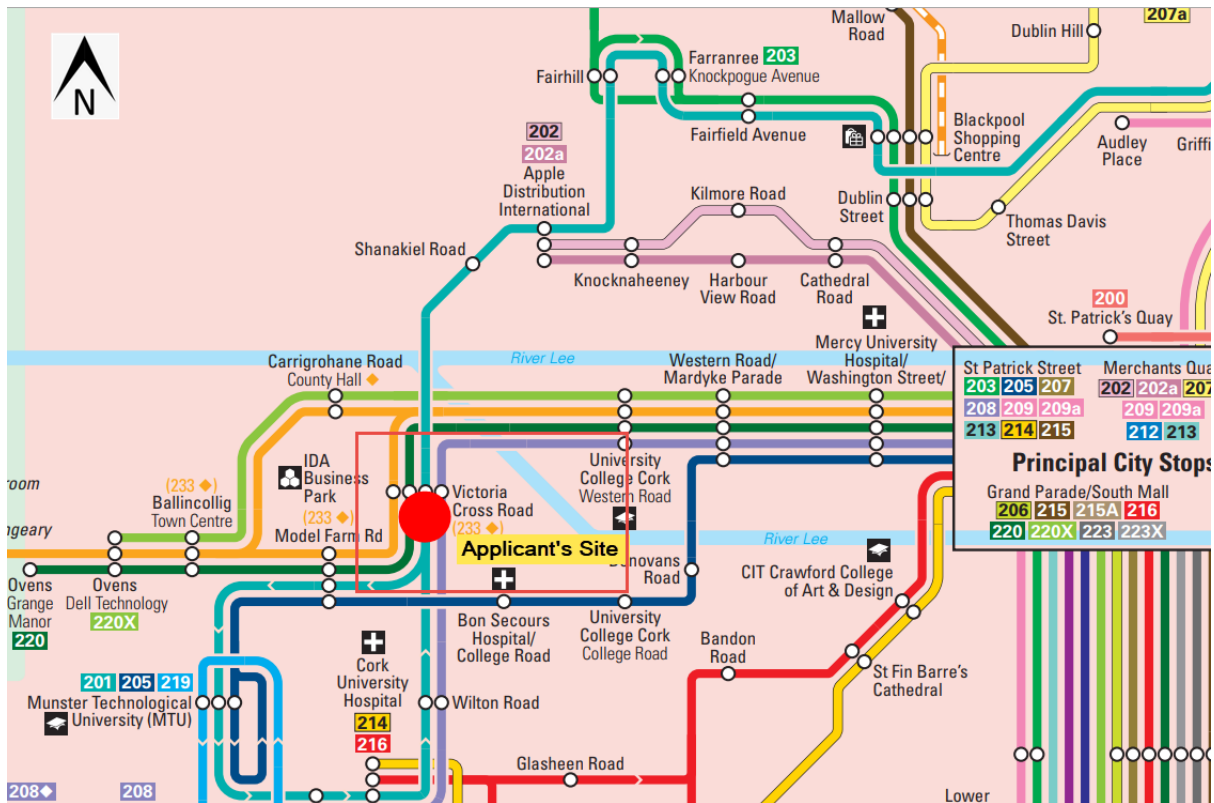


Figure 2.7 Site's proximity to nearby bus stops (Transport for Ireland).

The following bus routes served are: 201,205,208,220,220x,233,235,239

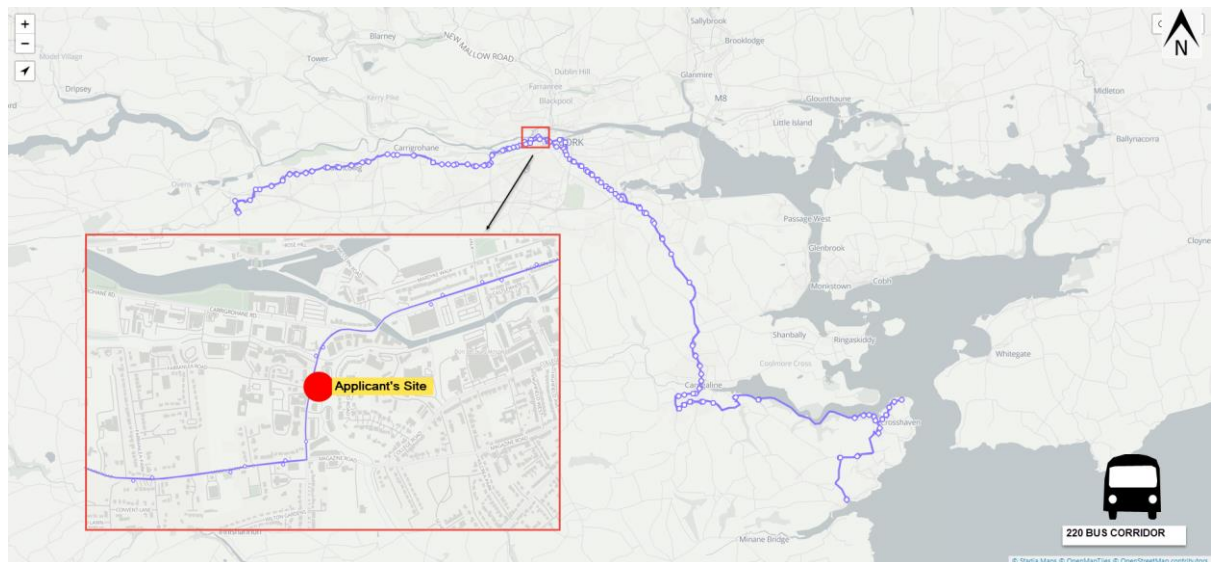


Figure 2.8 Existing 220No. Bus route

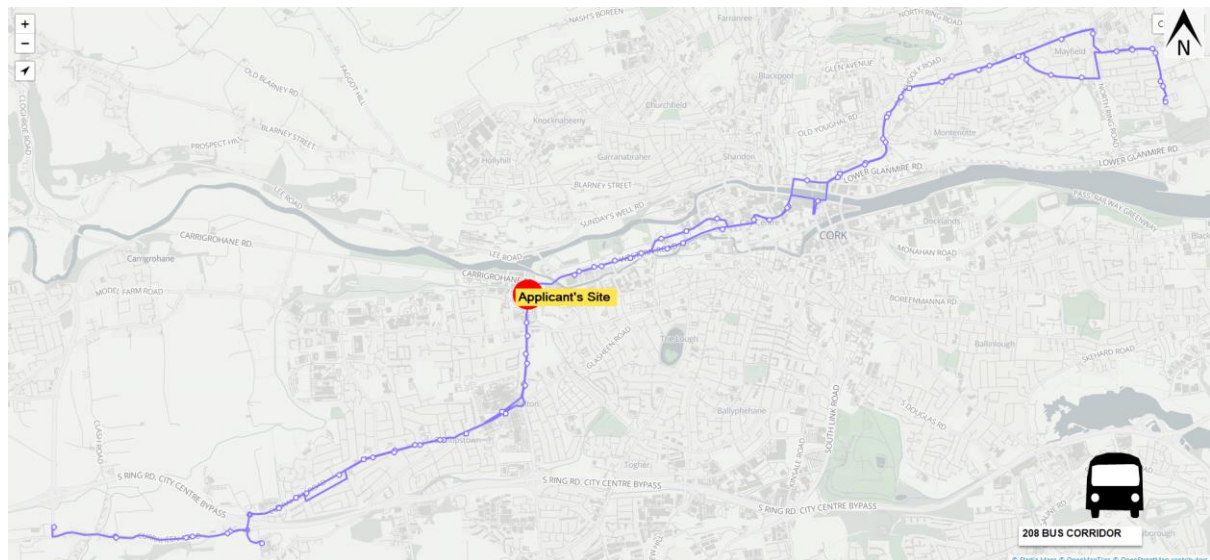


Figure 2.9 208No. Bus route

2.2 Existing Cycle Facilities

Existing dedicated cycle facilities are not widely provided to local commuters. Currently commuting into the city centre by bicycle requires travelling alongside urban street traffic.

The main trip generators in the area include MTU, Wilton Shopping Centre, employment areas in Doughcloyne and Togher, Cork University Hospital and in the future Curraheen Science Park

The main routes proposed in the Cork City Southwest area are the following:

- Greenway routes CSW-GW1 to GW8 – these routes will provide an important leisure and tourism function as well as an alternative route for commuter cyclists.
- CSW-U4 – The east-west route at Pearse Road provides an important collector function for east-west trips to destinations such as MTU and UCC.
- CSW-U7, U11 and U21 – These three routes provide the main arterial routes into the city from the southwestern suburbs.

The Cork Cycle Network Plan produced by AECOM for Cork City Council grades the existing network within the city, encompassing the routes past the applicant's site. The following listed cycle routes are relevant for this proposed development location:

ROUTE CODE: CSW-U21 Road Name: Model Farm Road Section (where applicable): Curraheen River Greenway to Wilton Road Existing Facility and Quality of Service: There is currently a section of segregated cycle/ pedestrian track eastbound at the frontage of Boston Scientific with a QoS B. There are also advisory cycle lanes on both sides of the road further west with a QoS of C. Key Locations Served: Model Business Park employment area, surrounding residential. Pinch Points/Constraints: Traffic management and road configurations may need to be altered to provide a continuous cycling facility along this route.

ROUTE CODE: CSW-U11 Road Name: Wilton Road Section (where applicable): Model Farm Road to Glasheen Road Existing Facility and Quality of Service: There is currently a

segregated cycle lane northbound with a QoS of C. Quality of existing surface is poor. Key Locations Served: Surrounding residential area, Cork University Hospital, Bishopstown Credit Union, Sports Grounds. Pinch Points/Constraints: There is limited road space available to provide cycle lanes in a south bound direction, which means property acquisition would be necessary to provide a cycle lane southbound along this route.

ROUTE CODE: CCC-U1 Road Name: Western Road Section (where applicable): Carrigrohane Road to Dyke Parade Existing Facility and Quality of Service: There is an existing inbound cycle lane along this route with a QoS D. Pinch Points/Constraints: Limited Road width will impact the feasibility of completing a cycle lane within the bus lane for the length of this facility. There is no space for an outbound cycle.

ROUTE CODE: CCC-U42 Road Name: Mardyke Walk Section (where applicable): Dyke Parade to Thomas Davis Bridge Existing Facility and Quality of Service: There are currently no dedicated cycle facilities along this route. Pinch Points/Constraints: Parking south of Thomas Davis Bridge

ROUTE CODE: CCC-GW1 Road Name: Fitzgerald Park Greenway Section (where applicable): Mardyke Walk to Western Road Existing Facility and Quality of Service: There is currently a segregated pedestrian/cycle path along this route with a QoS of A. Key Locations Served: Fitzgerald Park, UCC including Mardyke Sports Ground, links to the City Centre Network. Pinch Points/Constraints: No major constraints given existing nature of this route

2.3 Existing Pedestrian Facilities

Excellent pedestrian facilities are provided to local commuters along the local street network. Walking facilities are provided either side of the carriageway along the Wilton Road and connect to the City Centre.

3 PROPOSED DEVELOPMENT

3.1 Planning Application

A site layout has been developed by the applicant's Architects, Butler Cammoranesi Architects. The applicant's site layout is shown in the figure below, with the proposed pedestrian/cycle accesses and bicycle parking areas outlined. The pedestrian entrance from Orchard Road is via a pedestrian plaza which provides access to the inner pedestrian circulation area of the building.

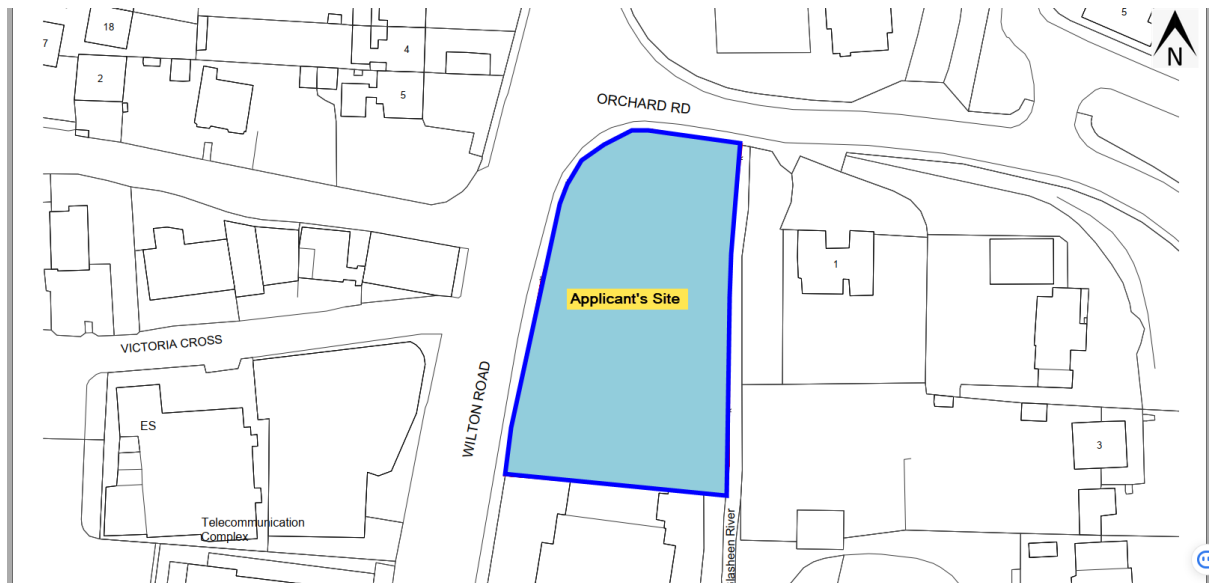


Figure 3.1 Proposed Development Site Layout- Ground Floor. (Butler\Cammoranesi)

The list below sets out proposed development details:

- The construction of 78no. student apartments consisting of 206 no. bed spaces(ranging in size from single bed studios to 8bed apartments), with common facilities, a reception area, management offices and storage and all associated ancillary development including plant and equipment, bin storage, landscaping, pedestrian access, and bicycle parking. The proposed development is six storeys in height.

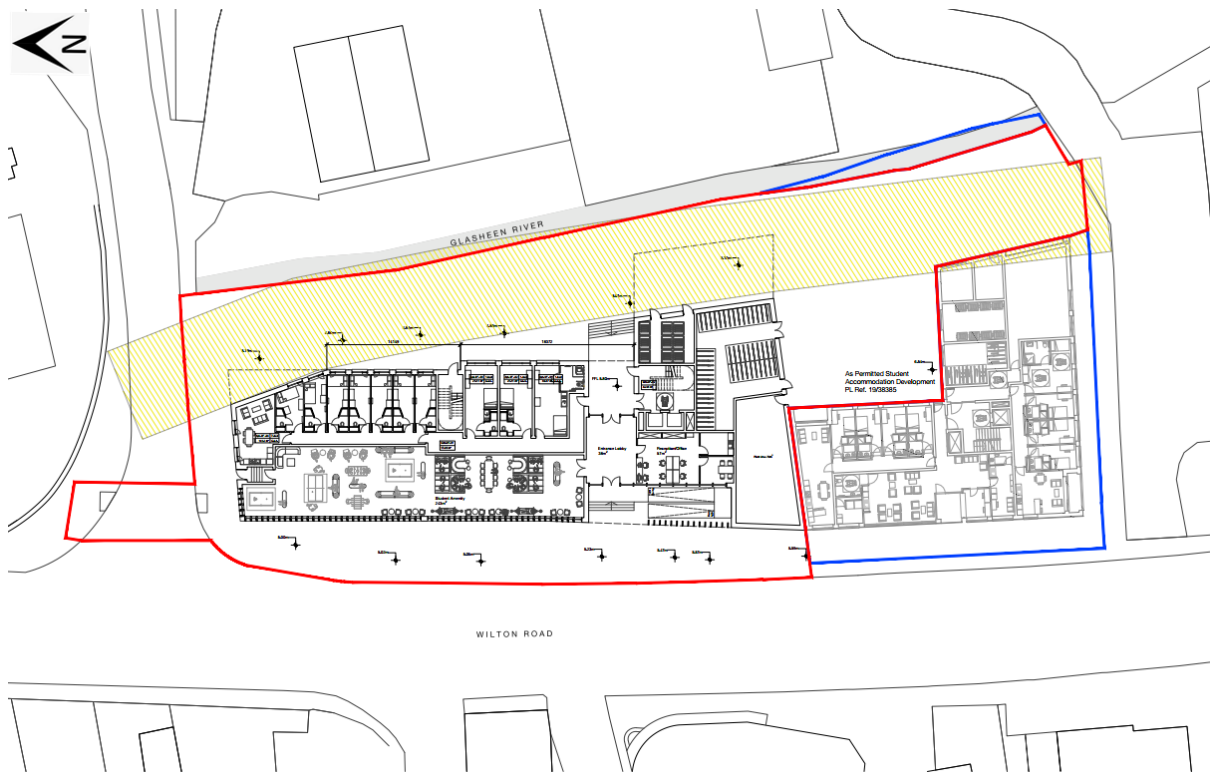


Figure 3.2 Proposed Development Site Layout- Typical Ground Floor Plan. (Butler\Cammoranesi)

No resident parking is proposed for the site. This compares favourably to the maximum allowable provision of 1no. space per 10no. bedspaces, as outlined for Zone 3 (Ref. Table 16.8, Cork City Development Plan 2015-2021). Such a provision represents a positive proposal from a sustainable travel viewpoint. The lack of parking for the site will serve to encourage residents to use alternative travel modes. This document aims to outline how this proposal can be realised.

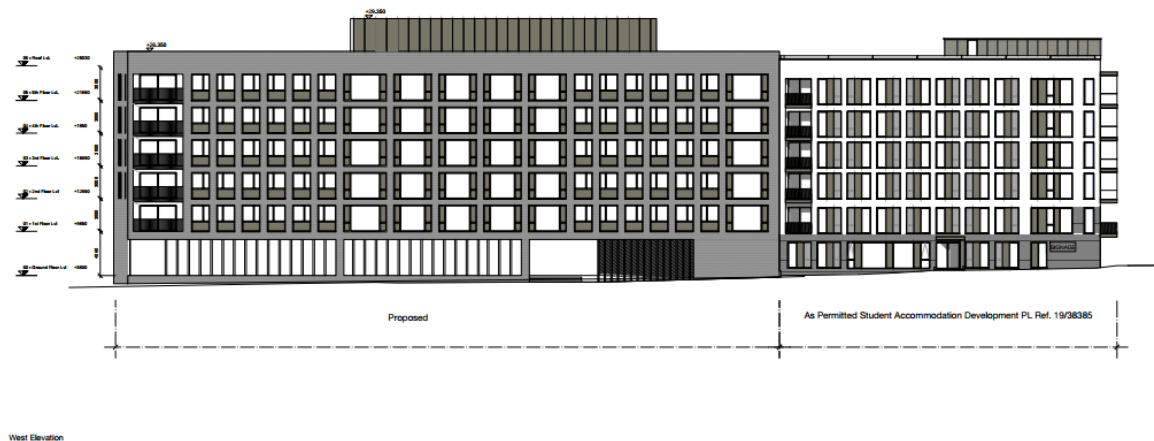


Figure 3.3 Proposed Development Site Elevation (Butler\Cammoranesi)

4 PLANNED INFRASTRUCTURAL IMPROVEMENTS

4.1 Proposed Pedestrian and Cycle Improvements

The Cork Cycle Network Plan produced by AECOM for Cork City Council grades the existing network within the city, encompassing the routes past the applicant's site. The following listed cycle routes are relevant for this proposed development location:

ROUTE CODE: CSW-U21 Road Name: Model Farm Road Section (where applicable): Curraheen River Greenway to Wilton Road Proposed Infrastructure Type: This is proposed as a primary route with existing cycle facilities maintained and upgraded where possible west of Rossa Avenue. The possibility of providing a shared cycle/pedestrian track in both directions between Rossa Avenue and Bishopstown Avenue should be explored (eastbound shared path already in place for a section of this road). The approach to the Wilton Road junction from Model Farm Road is of limited width. The currently constrained road width offers limited opportunities for dedicated cycle facilities. A mixed street environment with considerable traffic calming measures would allow cyclists to travel through this section of Model Farm Road more safely. An alternative east-west route (that also serves Mount Mercy College) via Farranlea Park/ Road residential area to the north would be a much more traffic calmed environment and may act as a suitable alternative route for some trips to avoid the busy Model Farm Road/Wilton Road junction. Key Locations Served: Model Business Park employment area, surrounding residential. Pinch Points/Constraints: Traffic management and road configurations may need to be altered to provide a continuous cycling facility along this route.

ROUTE CODE: CSW-U11 Road Name: Wilton Road Section (where applicable): Model Farm Road to Glasheen Road Existing Facility and Quality of Service: Proposed Infrastructure Type: This is proposed as a primary route maintaining the existing cycle lane within bus lane in the north bound direction. Limited road space means that provision of a cycle lane in a southbound direction will require property acquisition within 1-2 metres of the front gardens of approximately 40 properties along this route. Surface quality on this section has been revised as an issue. Key Locations Served: Surrounding residential area, Cork University Hospital, Bishopstown Credit Union, Sports Grounds. Pinch Points/Constraints: There is limited road space available to provide cycle lanes in a south bound direction, which means property acquisition would be necessary to provide a cycle lane southbound along this route. An alternative segregated path exists along the eastern boundary of the Presentation Brothers Sports Grounds that could be promoted as the southbound connection in this area.

ROUTE CODE: CCC-U1 Road Name: Western Road Section (where applicable): Carrigrohane Road to Dyke Parade Proposed QoS: It is proposed to upgrade this cycle lane to at least a QoS of B. Proposed Infrastructure Type: This is proposed as a primary route utilising and upgrading the existing city bound cycle lane within the existing bus lane. TM arrangements should be explored for the possibility of completing the missing link at Gaol Cross. Key Locations Served: UCC, surrounding residential area, Mardyke Arena, County Hall, Kingsley Hotel. Pinch Points/Constraints: Limited Road width will impact the feasibility of completing a cycle lane within the bus lane for the length of this facility. There is no space for an outbound cycle lane but cyclists travelling in this

ROUTE CODE: CCC-U42 Road Name: Mardyke Walk Section (where applicable): Dyke Parade to Thomas Davis Bridge Proposed Infrastructure Type: This is proposed as a primary route with a mixed street facility providing a two-way link along Mardyke Walk. Improved signage and road markings to alert motorists to cyclists will be required. On the section of the R846 between Mardyke Walk and Thomas Davis Bridge, traffic calming and narrowing of traffic lanes should be investigated. Key Locations Served: Tyndall National Institute, Presentation Brothers College, St. Joseph's National School, Fitzgerald Park, Mardyke Sports Grounds (UCC). Pinch Points/Constraints: Parking south of Thomas Davis Bridge

ROUTE CODE: CCC-GW1 Road Name: Fitzgerald Park Greenway Section (where applicable): Mardyke Walk to Western Proposed QoS: It is proposed to maintain the QoS of at least A along this route. Proposed Infrastructure Type: This is an existing greenway route along the banks of the River Lee and over Daly's Bridge that can tie into the existing and proposed greenway network further to the west. Key Locations Served: Fitzgerald Park, UCC including Mardyke Sports Ground, links to the City Centre Network. Pinch Points/Constraints: No major constraints given existing nature of this route

Figure 4.1 below shows the mapping of the existing cycle facilities listed above. The recommendations listed by AECOM should be implemented to provide safe connectivity and present cycling as a viable transport mode from the site and The Lough.

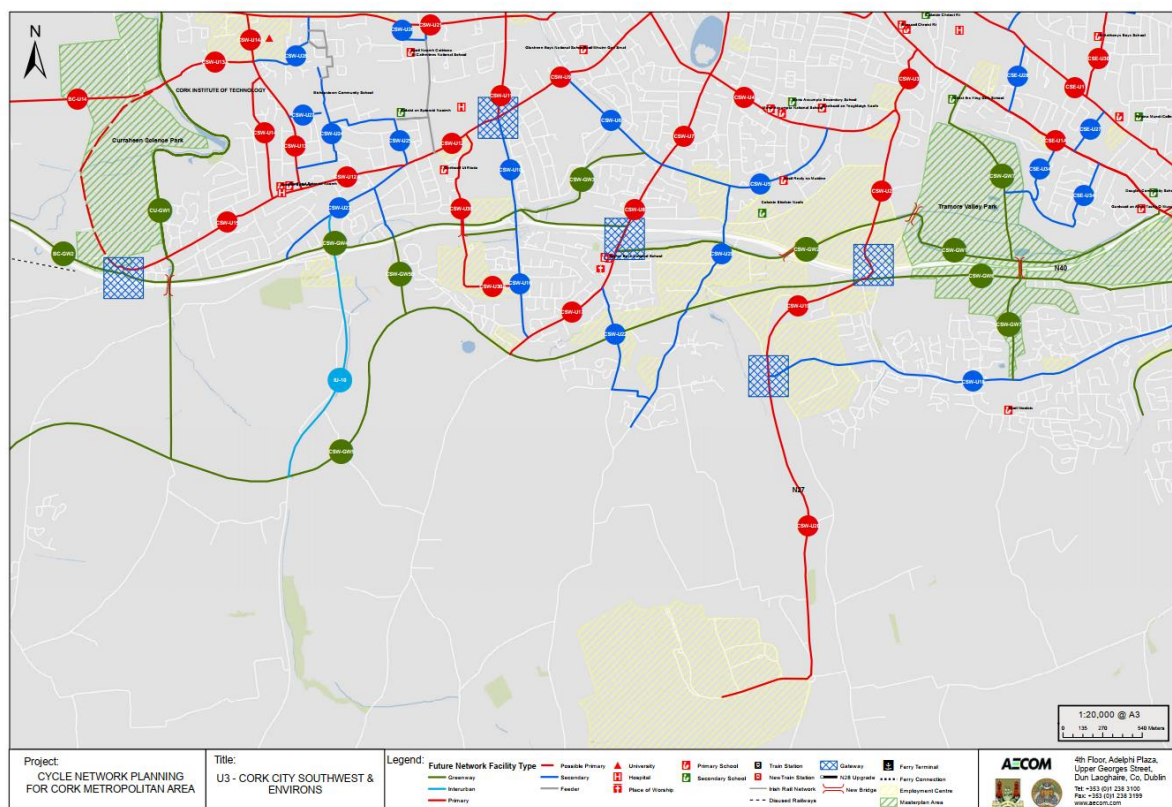


Figure 4.1 Cycle routes identified in the Cork Cycle Network Plan.

Further planned improvement and expansion of off-road pedestrian and cycle facilities are identified, near the site, in the Cork City Development Plan and Cork Cycle Network Plan. As referenced above, substantial off-road and on road cycling/pedestrian facilities are available in the vicinity of the site connecting it to UCC and MTU, with further improvement planned for the area.

The Cycling Network Plan for the Cork City Metropolitan Area (Cork City and Cork County) outlined further detail for cycle improvements throughout the wider Cork City area. An extract from CMATs mapping for the area in the vicinity of the site is shown below. These graphics serves to outline intended improvements to the city cycle network and bus corridors in the vicinity of the site.

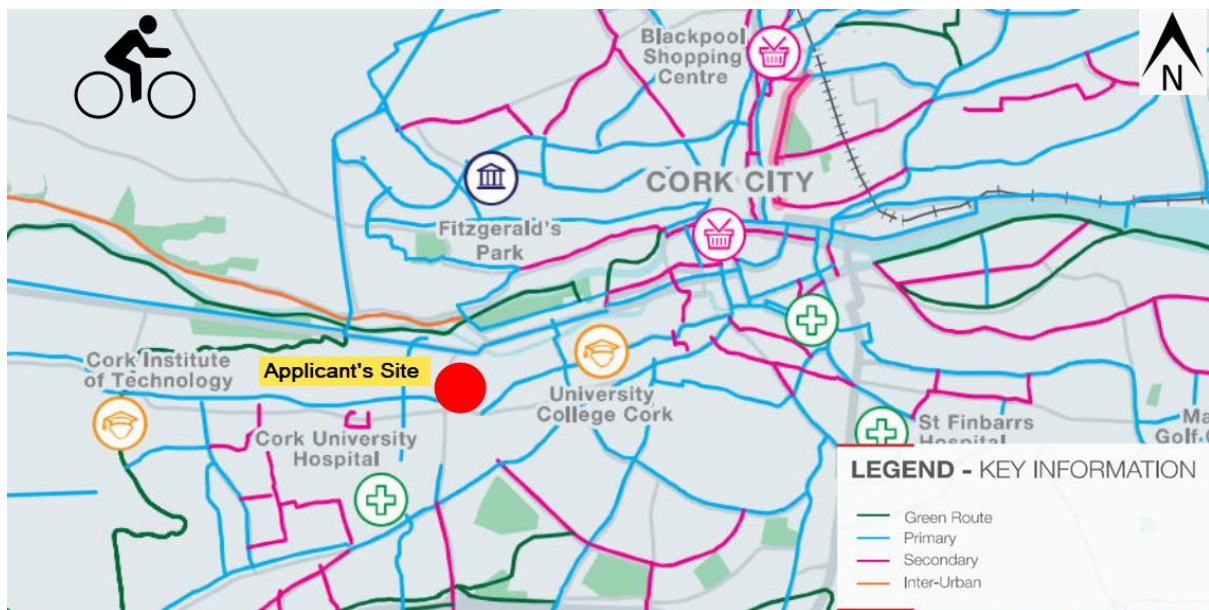


Figure 4.2 Cork Cycle Network Plan – Cork Inter Urban Route Network

4.2 Bus Connects

BusConnects is the National Transport Authority's (NTA) programme to greatly improve bus services in Irish cities. BusConnects is contained within the Government's National Development Plan 2021 – 2030 and the Climate Action Plan 2019.

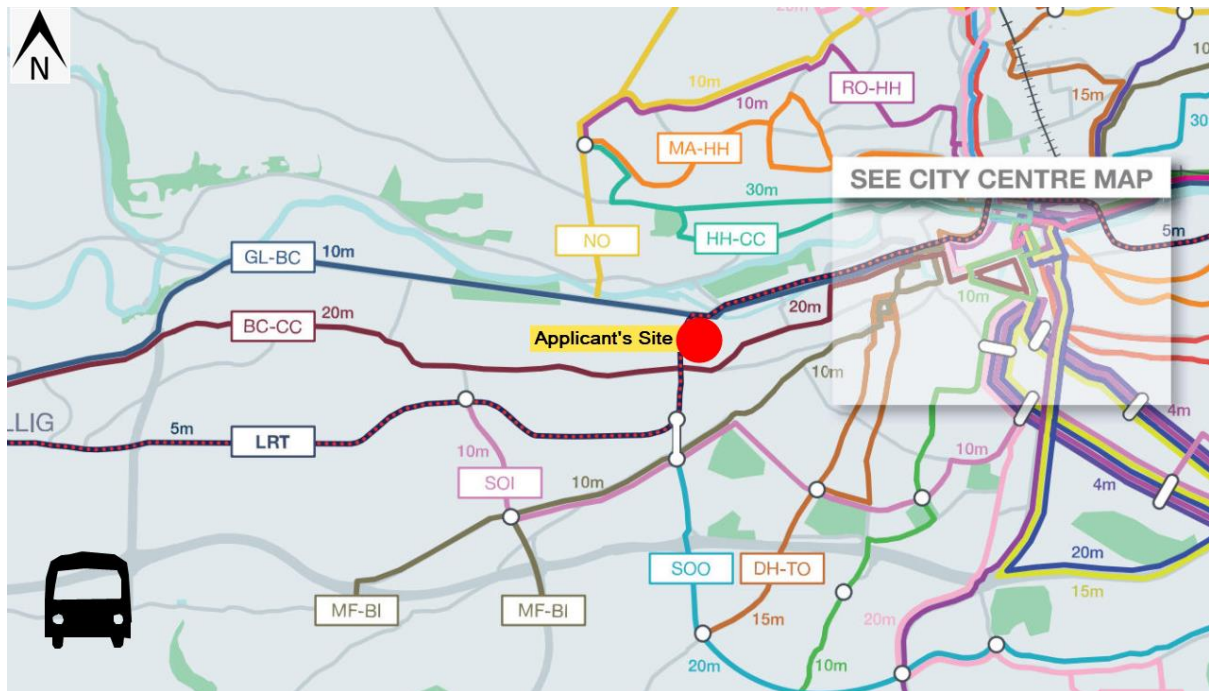


Figure 4.3 Bus Connects Routes Map - Cork Metropolitan Area Draft Transport Strategy

The objective of BusConnects for Cork is to:

- An increase of over one third in bus services in Cork.
- Shorter waits and more direct routes for many people.
- Create a simpler network and schedules.
- Provide additional services at weekends.

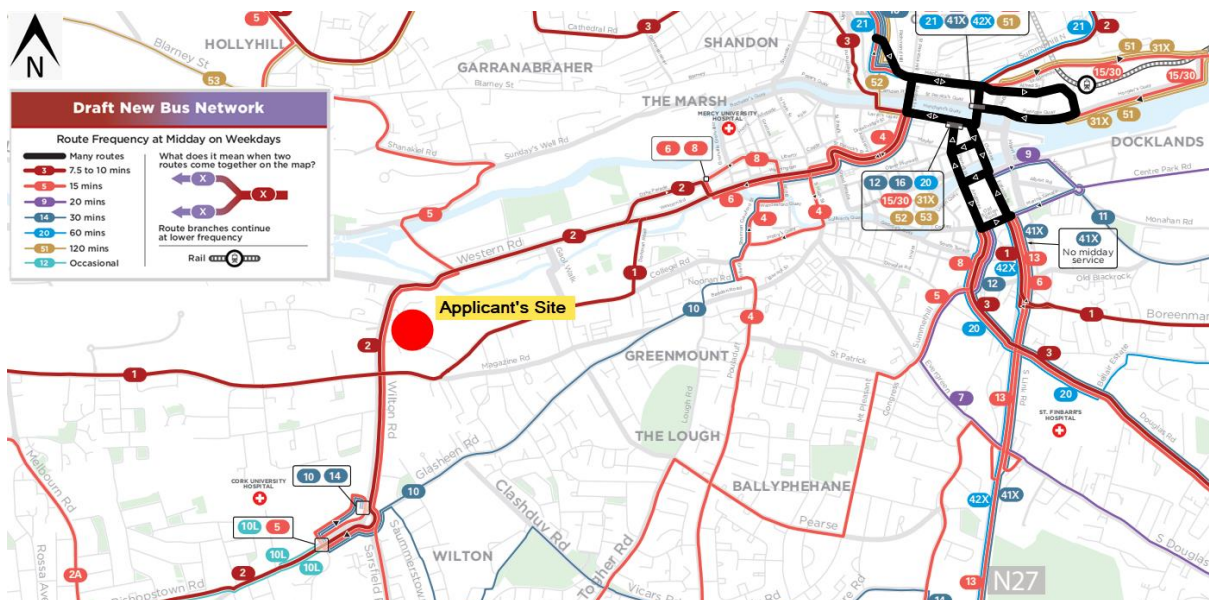


Figure 4.4 Bus Connects Routes Map near applicant's site

The applicant's site is well positioned for future residents/students of the development to take advantage of these proposed transport improvements. A public transport corridor with a high route service frequency would lead to greater use of public transport, producing tangible modal shift.

5 PROPOSED MOBILITY MANAGEMENT INITIATIVES

5.1 Mobility Manager

It is proposed that the apartment management should appoint a Mobility Manager to implement the recommendations of the MMP and to further develop the plan, on an ongoing basis.

The primary task of the Mobility Manager would be to implement measures and initiatives which may encourage modal shift to sustainable travel modes and to carry out audits and assessment of travel patterns at regular intervals.

5.2 Role of the Mobility Manager

The role of the Mobility Manager is outlined below:

- Collect and advertise local public transport routes and timetables.
- Liaise with local transport providers.
- Liaise with resident on transport issues and possible improvements.
- Liaise with employers on sustainable travel initiatives and plans.
- Liaise with Cork City Council on sustainable travel initiatives.
- Promote sustainable travel modes amongst staff, including car-sharing potential.
- Provide education material regarding sustainable travel to residents.
- Ensure appropriate lockers and safe bike storage facilities are available.
- Monitor road safety of various modes in and around the apartment complex.
- Develop a taxi / drop-off management plan to ensure the efficient operation of the set-down area at the front of the building to ensure no impact of drop off on the busy Wilton Road.

5.3 Pedestrians and Cyclists

Ensure that the appropriate level of cycle parking is provided. All cycle parking should be secure and ideally covered. The recommended cycle parking quanta, as set out in the Cork City Development Plan 2015-2021, of one space per one apartment should be provided, where-in-so-far as possible. It is proposed to provide circa **110 cycle stands**, morethan the required number. This aligns with the requirements set out in the Cork CityDevelopment Plan and the design standards for new apartments issued by theDepartment of Housing, Planning and Local Government.

The Mobility Manager should monitor and ensure that pedestrians and cyclists facilities are maintained and in a clean, operational condition. The Mobility Manager should also monitor motorbike use and consider the need to provide motorbike parking on site, if required.

Consideration should be given to the implementation of cycle priority road markings within the apartment car park to protect cyclists particularly in the vicinity of the car park and car park entrance.

The fully developed mobility plan will promote walking and cycling as part of a daily exercise routine and will provide information on routes, journey times and calories burned. The combination of walking with public transport/taxi services should also be encouraged.

'30 minutes of aerobic activity, such as a brisk walk, per day helps reduce the risk of heart disease'

(Reference, 'The Route to Sustainable Commuting, An Employers Guide to Mobility Management Plans produced by the Dublin Transportation Office, Kirklees Metropolitan Council and the Irish Energy Centre).

5.4 Local Services and Taxis

The Mobility Manager will provide contact numbers and locations of local taxi ranks as part of its support to residents. Taxis have all the benefits of a drive-share program with the added benefit of giving the user more flexibility on how and when the return trip is made. A reduction in trips particularly during peak hours reduces stress on the roads network as well as fuel consumption and carbon dioxide emissions. Discounts/offers for residents could be negotiated with local taxi ranks/companies.

5.5 Public Transport

The development location is well served by regular bus routes. The availability of a public transport system like this would allow users of the proposed development an alternative mode of travel, adding to the future modal shift target objectives.

The mobility management plan would be updated to include for:

- Negotiation of travel-related discounts/offers for residents
- Administration of low-cost monthly/annual tax-saver commuter ticket schemes
- Timetables, routes, and maps
- Journey time indicators
- Advertise real-time apps
- Lobby local authorities and bus providers for late-night bus services and extension of the city bike rental scheme.

Government supported programs to encourage people to use public transport include up to a 48% saving on standard pay-over-the-counter charge by means of tax saving schemes.

The Mobility Manager should liaise with the resident's employers assigned Mobility Managers to discuss appropriate public transport initiatives. Such a group should also liaise with Bus Eireann to discuss public transport demand and possible route improvement measures.

5.6 Connectivity to Public Transport Hubs

Bus Eireann provides several services which connect the city centre area to the Victoria Cross area. Kent Station provides access to mainline services to/from Heuston Station in Dublin and Tralee in Kerry. It is also served by local commuter routes to/from Middleton and Cobh. Further details can be found at www.irishrail.ie.

Similarly, the Parnell Place Bus Station in Cork provides excellent onward connectivity to destinations countrywide. The 208 provides regular connectivity between the bus station and Wilton Road. See www.buseireann.ie for further details. The "Transport for Ireland" "Journey Planner" and associated App provide information on suggested public transport, walking and cycling route options in urban areas.

As part of the Government's Covid 19 Recovery Plan, priority one is to advance the green transition of the economy.

This financial support will provide residents greater public transport services and links to further connection hubs.

5.7 Coordinating and implementing the plan

The role of the Mobility Manager will be to steer the travel plan in the right strategic direction and co-ordinate its activities with the rest of the facility. The developing Mobility Management Plan will be required to provide information, services, and advice around all aspects of traveling to and from the location. The information provided, included on a notice board in each apartment, in the reception area and on display boards throughout the development would include advice on travel times to bus timetables and maps, information on local taxi services, details of walking and cycling groups. The manager would also be responsible for negotiating travel related discounts with local service providers (taxi companies), the co-ordination of the various user groups and lobbying of the Local Authority bodies for the improvement of services within the general area.

The successful implementation of the plan will also require the careful and attentive control of parking in the vicinity of the complex. Parking in inappropriate locations should not be allowed. Parking on the main road, in adjoining properties, on the route of fire-tender or emergency vehicle routes should not be allowed and dealt with appropriately. The effective use of bollards, high kerbs and physical enforcement measures should be applied where necessary, in parallel with monitoring/policing by on site management staff. Parking on the adjoining Wilton Road, Farranlea Road, Wilton Road and Orchard Road would not be appropriate and this should be set out as a condition of letting to all tenants.

To be effective in its purpose, the Mobility Management Plan must be kept up to date. Changes to infrastructure such as the provision of cycle lanes, or additional public services coming online all should be reflected in the information being presented to the end user. As previously mentioned, promotion of the alternative modes of transport available should be made on a regular basis.

6 Key Recommendations

It is necessary that substantial efforts be made to encourage the use of sustainable travel modes. The quality of pedestrian and cycle facilities, coupled with the level of public transport available to residents means that achieving an appropriate, sustainable modal split is entirely achievable.

The objective of the Mobility Manager will be to encourage sustainable travel modes to achieve the required modal split and improve this quanta year-on-year. To this end the Mobility Manager will review and set targets for increases in the modal share for walking, cycling and bus travel annually.

Key site-specific recommendations include:

- Appoint Mobility Manager to further develop and implement Mobility Management Plan
- Advertise all local bus route timetables.
- Advertise all bus route timetables from The Lough (e.g., 208, etc)
- Ensure future renters/buyers of the apartments are informed of the parking restrictions of the site and that on street parking is discouraged.
- Provide information on specific travel options and journey times by sustainable modes to various destination
- Provide all travel information on noticeboard in individual apartments, at reception and at communal areas.
- Provide local Taxi company contact details and endeavour to provide standardised, negotiated rates to college, city, and transport hubs (e.g., bus station).
- Ensure that parking is controlled and always monitored and that illegal parking, in inappropriate locations is not permitted.
- Provide safe, clean, and dry cycle facilities.
- Provide information on local and national travel initiatives.
- Control & regulate on-site car parking & ensure that parking areas are assigned to adjoining apartment block only to reduce.
- Ensure no parking associated with the complex occurs on the adjoining streets by referencing same in tenant agreements.
- Advertise new cycle, pedestrian, and bus route information.
- Liaise with residents on site specific concerns and initiatives.
- Liaise with local authority sustainable travel offices and Bus Eireann.

- Liaise with UCC/ MTU/ resident's employers Mobility Manager
- Liaise with the future Bus Connects implementation

7 REFERENCES

The Route to Sustainable Commuting, An Employer's Guide to Mobility Management Plans *published by Dublin Transportation Office, Killeesh Metropolitan Council, Irish Energy Centre.*

The Traffic Management Guidelines *published by the Dublin Transportation Office*

2020 Vision-Sustainable Travel and Transport: Public Consultation Document *published by the Department of Transport.*

Cork City Development Plan 2015-2021 Volume 1

Cork Cycle Network Plan. Aecom for Cork City Council

Cork Metropolitan Area Draft Transport Strategy (CMATS)

Bus Eireann

TFI (Transport for Ireland)

Proposed Cork City Development Plan 2022-2028

BusConnects Cork, National Transport Authority

Sustainable Urban Housing: Design Standards for New Apartments Guidelines for Planning Authorities (Department of Housing, Planning and Local Government -March 2018)

Government's National Development Plan 2021 – 2030

Climate Action Plan 2019.

8 APPENDIX

(Page intentionally blank)

9 APPENDIX A – WALKING AND CYCLING ISOCHROME MAPS

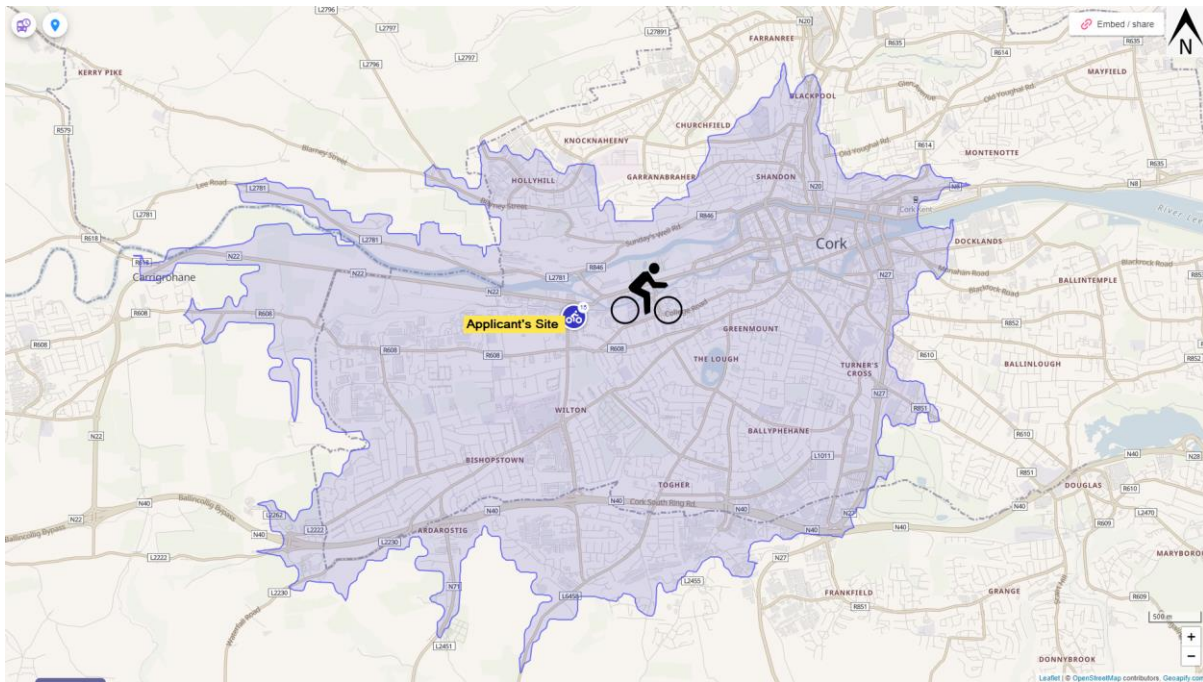


Figure 9.1 – Walking Isochrones. 15min cycling from site

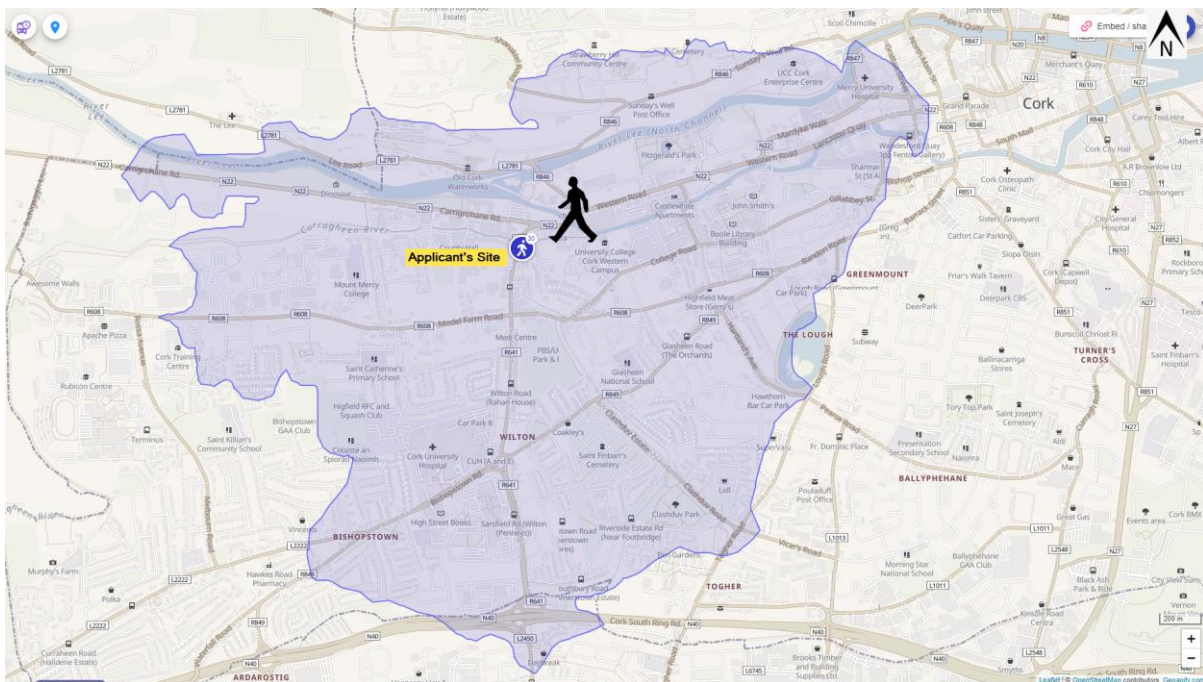


Figure 9.2 – Cycling Isochrones. 30min walking from site

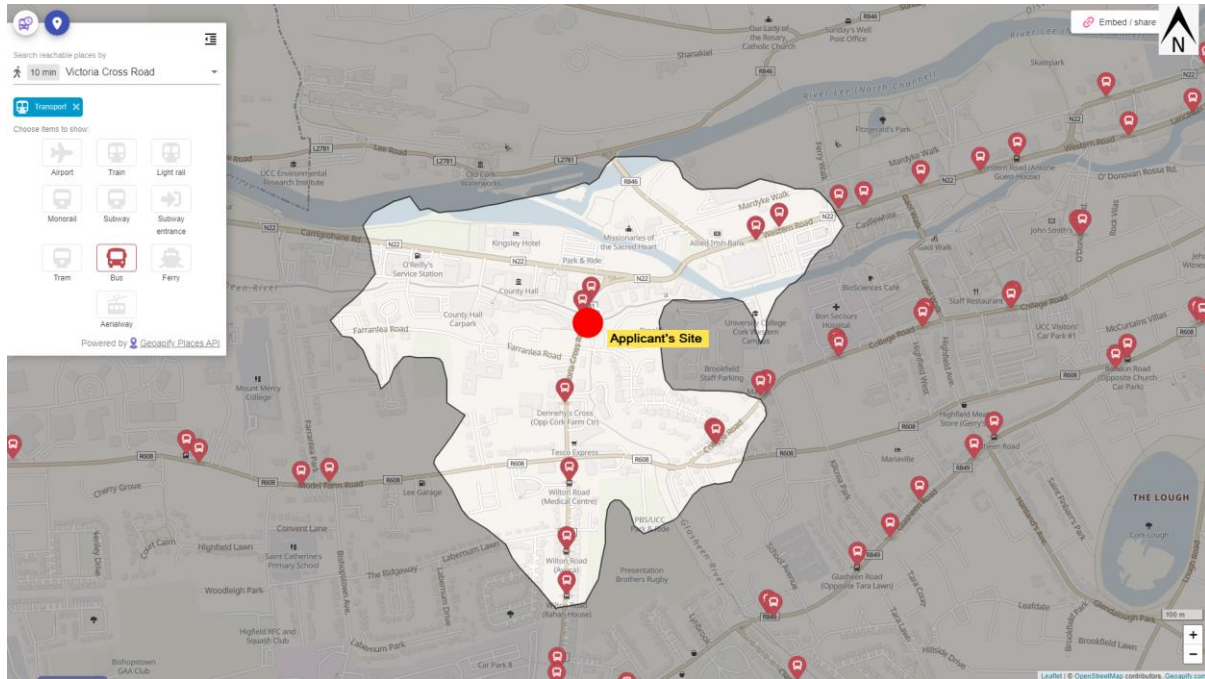


Figure 9.3 Public Transport Bus Stops within 10minutes walking range of applicant's site

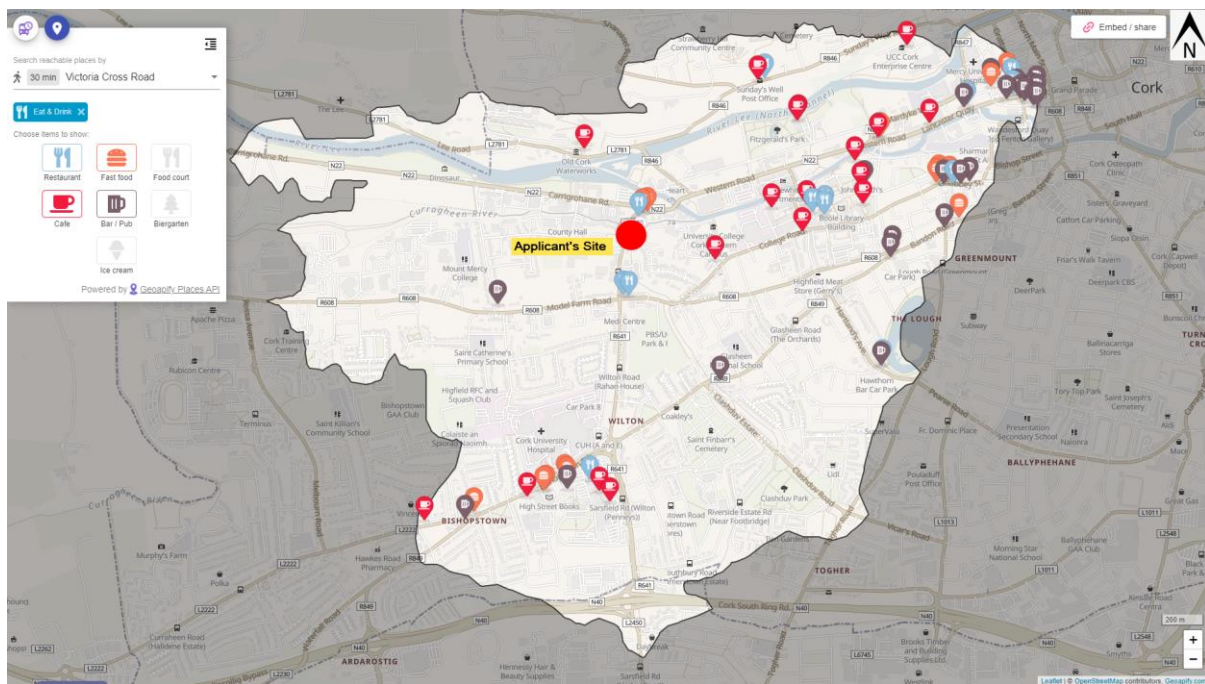


Figure 9.4 Restaurant, Café, Pub locations within 30minutes walking range of applicant's site

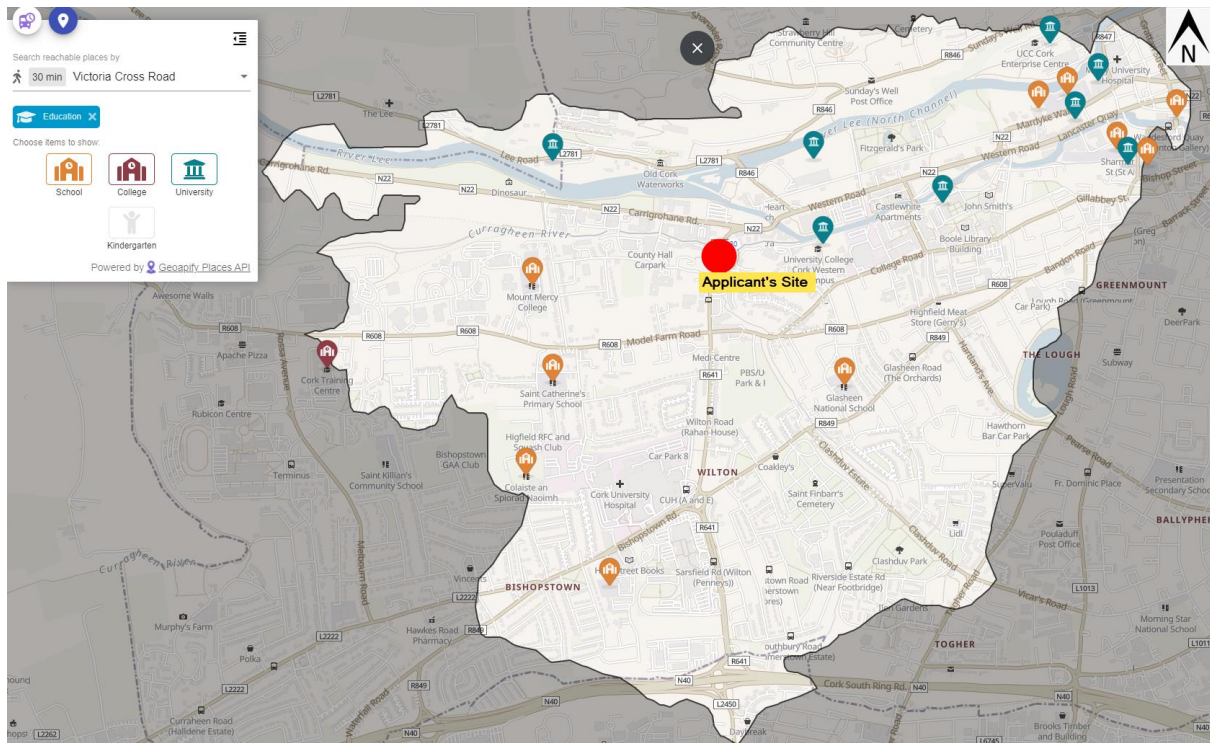


Figure 9.5 Educational centres within 30minutes walking range of applicant's site

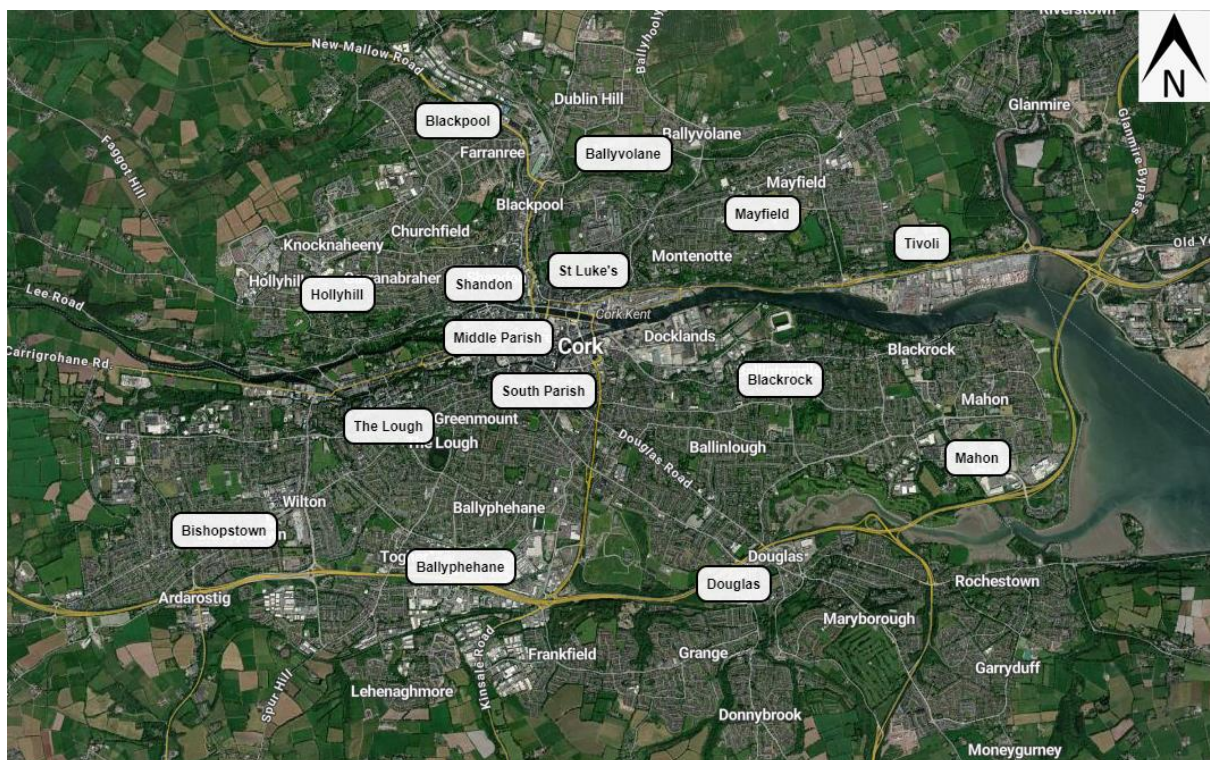


Figure 9.6 Boroughs of Cork City

10 APPENDIX B – LOCAL BUS ROUTES / TIMETABLES

Please refer to buseireann.ie for the latest bus scheduling information.

The routes which service the applicant's site are as identified previously.

Full city bus route listing (as per Transport for Ireland):

200 Cobh – Cork
 201 CUH – MTU – Wilton Road – Hollyhill – Farranree – Blackpool – Ballyvolane – Lotabeg
 202 Apple Campus – Hollyhill – City Centre – Mahon
 203 Lehenaghmore – City Centre – Farranree
 205 Cork Institute of Technology – St Patrick Street – Kent Station
 207 Donnybrook – Douglas – Ballyvolane – Glenheights
 207a Glenthorn – Merchant's Quay via Blackpool and Glen Avenue
 208 Lotabeg – City Centre – Bishopstown/Curraheen
 209 St Patrick Street – Audley Place – Montenotte – Lotamore
 209a St. Patrick Street – Friars Walk – Connolly Rd – Pouladuff – Ballyphehane
 213 Patrick Street – Black Ash Park via South Mall
 214 St Patrick Street – Cork University Hospital
 215 Cloghroe – Blarney – City Centre – Ballinlough – Mahon Point
 215a City Centre – Boreenmanna Rd – Mahon Point
 216 Mount Oval to Cork University Hospital via City Centre
 219 Cork Institute of Technology – C.U.H – Togher – Ballyphehane – Douglas – Ringmahon – Mahon Point/City Gate
 220 Ovens (EMC) – Ballincollig – City Centre – Maryborough Hill – Carrigaline (Liosbourne & Ferney Road)
 220x Ovens – Ballincollig – Cork City – Carrigaline – Crosshaven
 221 Cork City – Tivoli – Glanmire – Riverstown – Hazelwood – Knockrah
 223 Cork – Monkstown – Ringaskiddy – Haulbowline
 223x South Mall – Haulbowline
 225 Cork Airport – Ballygarvan – Carrigaline – Ringaskiddy – Haulbowline
 226 Cork Railway Station – Cork City Bus Station – Cork Airport – Kinsale
 226a Cork Railway Station – Cork City Bus Station – Airport Business Park – Cork Airport
 233 Cork – Macroom
 240 Cork – Cloyne – Ballycotton
 241 Cork – Midleton – Whitegate – Trabolgan
 245 Cork – Fermoy – Mitchelstown – Ballyporeen – Ardfinnan – Clonmel
 260 Cork – Youghal – Ardmore
 261 Cork – Midleton – Ballinacurra

Principal stops: St. Patrick's Street, Merchant's Quay, Parnell Place Bus Station and Grand Parade / South Mall.



Ashmount (Turning Circle) - Curraheen Village

[View In Website Mode](#)

The 208 bus line (Ashmount (Turning Circle) - Curraheen Village) has 2 routes. For regular weekdays, their operation hours are:

(1) Ashmount (Turning Circle) - Curraheen Village: 6:30 AM - 11:50 PM (2) Curraheen Village - Ashmount (Turning Circle): 6:30 AM - 11:35 PM

Use the Moovit App to find the closest 208 bus station near you and find out when is the next 208 bus arriving.

Direction: Ashmount (Turning Circle) - Curraheen Village

42 stops

[VIEW LINE SCHEDULE](#)

Turning Circle Stop 246491

Ashmount, Ireland

Ashmount Stop 246501

Soccer Pitch Stop 240271

Boherboy Road Stop 240281

Lotabeg Estate Stop 240291

North Ring Road Stop 240301

Old Youghal Road Stop 240311

Old Youghal Road, Cork

Knights Court Stop 240321

Mayfield Library Stop 255121

St Joseph's Church Stop 240331

Dillon's Cross Stop 240441

Windsor Terrace Stop 240451

Windsor Cottages, Cork

St Luke's Cross Stop 240461

Middle Glanmire Road, Cork

Summerhill North Stop 240471

Summerhill North, Cork

St Patricks Church Stop 240481

6 King's Terrace, Cork

208 bus Time Schedule

Ashmount (Turning Circle) - Curraheen Village Route
Timetable:

Sunday	7:45 AM - 11:45 PM
Monday	6:30 AM - 11:50 PM
Tuesday	6:30 AM - 11:50 PM
Wednesday	6:30 AM - 11:50 PM
Thursday	6:30 AM - 11:50 PM
Friday	6:30 AM - 11:50 PM
Saturday	6:35 AM - 11:50 PM

208 bus Info

Direction: Ashmount (Turning Circle) - Curraheen Village

Stops: 42

Trip Duration: 50 min

Line Summary: Turning Circle Stop 246491, Ashmount Stop 246501, Soccer Pitch Stop 240271, Boherboy Road Stop 240281, Lotabeg Estate Stop 240291, North Ring Road Stop 240301, Old Youghal Road Stop 240311, Knights Court Stop 240321, Mayfield Library Stop 255121, St Joseph's Church Stop 240331, Dillon's Cross Stop 240441, Windsor Terrace Stop 240451, St Luke's Cross Stop 240461, Summerhill North Stop 240471, St Patricks Church Stop 240481, Cork City Bus Stn Stop 243171, St Patrick's Street Stop 240491, Princes Street Stop 240501, Washington Street Stop 240511, Lancaster Quay Stop 240521, Ucc Western Rd Stop 240531, Western Terrace Stop 240541, Castlewhite Apts Stop 240551, Western Gateway Ucc Stop 240561, Wilton Road Stop 240571, Wilton Road Pharmacy Stop 240581, Rahan House Stop 240341, Credit Union Stop 240591, Wilton Centre Cuh Stop 214551, Bishops court Road Stop 240601, Firgrove Stop

Cork City Bus Stn Stop 243171

10 Parnell Place Bus Station, Cork

St Patrick's Street Stop 240491

17 Saint Patrick's Street, Cork

Princes Street Stop 240501

47 Saint Patrick's Street, Cork

Washington Street Stop 240511

11 Washington Street, Cork

Lancaster Quay Stop 240521

Ucc Western Rd Stop 240531

1 University Place, Cork

Western Terrace Stop 240541

Castlewhite Apts Stop 240551

Anneville, Cork

Western Gateway Ucc Stop 240561

Wilton Road Stop 240571

Wilton Road Pharmacy Stop 240581

Rahan House Stop 240341

Credit Union Stop 240591

Wilton Centre Cuh Stop 214551

Bishopscourt Road Stop 240601

Firgrove Stop 243741

Westgate Road Stop 243751

Deans Hall Stop 246471

Curraheen Road Stop 240641

Uam Var Avenue Stop 240651

Halldene Estate Stop 210341

University Tech Park Stop 240001

Marymount Hospice Stop 237221

Marymount Hospice Stop 246421

Curraheen Road, Ireland

Curraheen Road Est Stop 240661

L2222, Ireland

Curraheen Road Stop 240671

243741, Westgate Road Stop 243751, Deans Hall Stop 246471, Curraheen Road Stop 240641, Uam Var Avenue Stop 240651, Halldene Estate Stop 210341, University Tech Park Stop 240001, Marymount Hospice Stop 237221, Marymount Hospice Stop 246421, Curraheen Road Est Stop 240661, Curraheen Road Stop 240671, Curraheen Stop 210211



Direction: Curraheen Village - Ashmount (Turning Circle)

40 stops

[VIEW LINE SCHEDULE](#)

- Curraheen Stop 210211
- St Josephs Villas Stop 241121
- Curraheen Road Est Stop 241131
L2222, Ireland
- Marymount Hospice Stop 246431
Curraheen Road, Ireland
- University Tech Park Stop 241111
- Curraheen Estate Stop 241141
- Castlewhite Apts Stop 240111
- Spioraid Naoimh Stop 240021
- Deans Hall Stop 246461
- Westgate Road Stop 243771
- Firgrove Gardens Stop 243781
Firgrove Crescent, Cork
- Wilton Centre Cuh Stop 225031
Bandon Road, Cork
- Wilton Road Stop 240061
- Wilton Gardens Stop 240071
- Dennehy's Cross Stop 240081
- Victoria Cross Stop 240091
- Western Road Stop 240101
- Castlewhite Apts Stop 240111
- Ucc Gaol Cross Stop 255091
- University College Stop 240121
- Mardyke Walk Stop 240131
- Presentation College Stop 240141
- Mercy Hospital Stop 240681
Broad Street, Cork

208 bus Time Schedule

Curraheen Village - Ashmount (Turning Circle) Route
Timetable:

Sunday	8:00 AM - 11:30 PM
Monday	6:30 AM - 11:35 PM
Tuesday	6:30 AM - 11:35 PM
Wednesday	6:30 AM - 11:35 PM
Thursday	6:30 AM - 11:35 PM
Friday	6:30 AM - 11:35 PM
Saturday	7:00 AM - 11:35 PM

208 bus Info

Direction: Curraheen Village - Ashmount (Turning Circle)
Stops: 40
Trip Duration: 40 min
Line Summary: Curraheen Stop 210211, St Josephs Villas Stop 241121, Curraheen Road Est Stop 241131, Marymount Hospice Stop 246431, University Tech Park Stop 241111, Curraheen Estate Stop 241141, Castlewhite Apts Stop 240111, Spioraid Naoimh Stop 240021, Deans Hall Stop 246461, Westgate Road Stop 243771, Firgrove Gardens Stop 243781, Wilton Centre Cuh Stop 225031, Wilton Road Stop 240061, Wilton Gardens Stop 240071, Dennehy's Cross Stop 240081, Victoria Cross Stop 240091, Western Road Stop 240101, Castlewhite Apts Stop 240111, Ucc Gaol Cross Stop 255091, University College Stop 240121, Mardyke Walk Stop 240131, Presentation College Stop 240141, Mercy Hospital Stop 240681, Grand Parade Stop 240691, Patrick Street Stop 240171, Maccurtain Street Stop 240181, Summerhill North Stop 240191, Cork Chamber Stop 240201, Ballyhooley Road Stop 296141, Windsor Terrace Stop 240211, Cahergal Terrace Stop 289981, St Josephs Church Stop 240221, Mount Brosna Stop 240231, Iona Park Stop 240241, Colmcille Avenue Stop 240251, Springfield Road Stop 240261, Scoil Mhuire Stop 247201, Lotabeg Green Stop 247211, Ashmount Stop 246481, Turning Circle Stop 246491

Grand Parade Stop 240691

Grand Parade, Cork

Patrick Street Stop 240171

Saint Patrick Street, Cork

Maccurtain Street Stop 240181

48 MacCurtain Street, Cork

Summerhill North Stop 240191

York Terrace, Cork

Cork Chamber Stop 240201

Summerhill North, Cork

Ballyhooley Road Stop 296141

Windsor Terrace Stop 240211

Cahergal Terrace Stop 289981

Old Youghal Road, Cork

St Josephs Church Stop 240221

Mount Brosna Stop 240231

Iona Park Stop 240241

Colmcille Avenue Stop 240251

Iona Green, Cork

Springfield Road Stop 240261

Scoil Mhuire Stop 247201

Lotabeg Green Stop 247211

Ashmount Stop 246481

Turning Circle Stop 246491

Ashmount, Ireland





Fort Camden - Grange Road Terminus

[View In Website Mode](#)

The 220 bus line (Fort Camden - Grange Road Terminus) has 2 routes. For regular weekdays, their operation hours are: (1) Fort Camden - Grange Road Terminus: 24 hours (2) Grange Road Terminus - Fernlea Terminus: 24 hours
Use the Moovit App to find the closest 220 bus station near you and find out when is the next 220 bus arriving.

Direction: Fort Camden - Grange Road Terminus

75 stops

[VIEW LINE SCHEDULE](#)

Fort Camden Stop 232111

Camden Road Stop 245921

Camden Road Stop 247921

Point Lane Junc Stop 245901

Camden Rd Lwr Stop 247951

Crosshaven Stop 245111

Hayes' Hill, Ireland

Buckleys Pub Stop 245121

Lower Road

Crosshaven Boat Yard Stop 245131

The Grand Stop 245141

Royal Cork Yacht C Stop 245201

Kilnagleary Rd Stop 245211

Carrigaline Ind Est Stop 245221

Forrest Hills Stop 248201

Forest Hill, Ireland

Fernlea Stop 246741

Liosrua Stop 246771

4 Hillview, Carrigaline

Hillcrest Stop 246751

Clevedon Gardens, Carrigaline

Kilmoney Road Upper Stop 246761

220 bus Time Schedule

Fort Camden - Grange Road Terminus Route
Timetable:

Sunday	24 hours
Monday	24 hours
Tuesday	24 hours
Wednesday	24 hours
Thursday	24 hours
Friday	24 hours
Saturday	24 hours

220 bus Info

Direction: Fort Camden - Grange Road Terminus

Stops: 75

Trip Duration: 79 min

Line Summary: Fort Camden Stop 232111, Camden Road Stop 245921, Camden Road Stop 247921, Point Lane Junc Stop 245901, Camden Rd Lwr Stop 247951, Crosshaven Stop 245111, Buckleys Pub Stop 245121, Crosshaven Boat Yard Stop 245131, The Grand Stop 245141, Royal Cork Yacht C Stop 245201, Kilnagleary Rd Stop 245211, Carrigaline Ind Est Stop 245221, Forrest Hills Stop 248201, Fernlea Stop 246741, Liosrua Stop 246771, Hillcrest Stop 246751, Kilmoney Road Upper Stop 246761, Lower Clevedon Stop 246781, Carrigaline Stop 247971, Carrigaline Stop 245341, Carrigaline Hotel Stop 245241, Cork Road Stop 245271, Glenview Stop 245281, Herons Wood Stop 245291, Carrig Na Curra Stop 245301, Hiltown Stop 234611, Broadale Stop 231291, Lissadell Stop 232821, Maryborough Hill Stop 246971, The Paddocks Stop 242131, Douglas Shopping Ctr Stop 241371, Douglas Road Stop 241381, Woodview Stop 241391, Scoil Bhride Stop 241411, Wesley Chapel Stop 241401, Rosebank Stop 241421, Whitethorn Stop 241431, Belair Junction Stop 241441, St Finbarr's Hosp Stop 213911,

Lower Clevedon Stop 246781

Carrigaline Stop 247971

Carrigaline Stop 245341

Carrigaline Bridge, Carrigaline

Carrigaline Hotel Stop 245241

Cork Road Stop 245271

Glenview Stop 245281

R611, Carrigaline

Hérons Wood Stop 245291

Carrig Na Curra Stop 245301

Carrig na Curra, Carrigaline

Hilltown Stop 234611

Broadale Stop 231291

Wyndgates, Ireland

Lissadell Stop 232821

Maryborough Hill Stop 246971

The Paddocks Stop 242131

The Paddocks, Cork

Douglas Shopping Ctr Stop 241371

East Douglas Street, Ireland

Douglas Road Stop 241381

Woodview Stop 241391

Woodview, Cork

Scoil Bhride Stop 241411

Wesley Chapel Stop 241401

Rosebank Stop 241421

Whitethorn Stop 241431

Belair Junction Stop 241441

St Finbarr's Hosp Stop 213911

Southern Road Stop 241451

Douglas Road, Cork

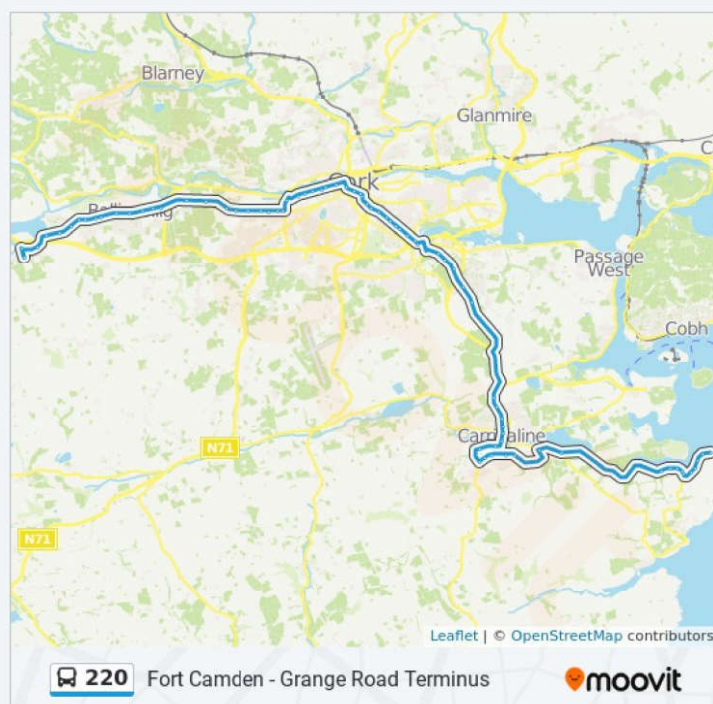
Infirmary Road Stop 240901

Newenham Terrace, Cork

South Terrace Stop 240911

South Terrace, Cork

Southern Road Stop 241451, Infirmary Road Stop 240901, South Terrace Stop 240911, Georges Quay Stop 240921, Cork City Library Stop 241461, Washington Street Stop 244161, Lancaster Quay Stop 240521, Ucc Western Rd Stop 240531, Western Terrace Stop 240541, Castlewhite Apts Stop 240551, Western Gateway Ucc Stop 240561, Wilton Road Stop 240571, Model Farm Road Stop 213801, Bishopstown Park Stop 241781, Farranlea Park Stop 241791, Dept Of Agriculture Stop 241801, Parkway Drive Junc Stop 241811, Model Farm Park Stop 244241, Edenhall Stop 247231, Inchaggin Stop 244431, Hilton Estate Stop 231601, Inniscarra View Stop 232461, Rosewood Stop 244191, Fr Sexton Park Stop 244201, Ballincollig Stop 357741, Ballincollig Town C Stop 232421, Stop No. 232471, City West Mews Stop 244221, Coolroe Heights Stop 244341, Old Quarry Stop 244351, Aylsbury Stop 244231, Ballincollig West (Classes Lake Westbound), Ballincollig Stop 247981, Emc Terminus Stop 245791, Grange Manor Stop 246621, Ovens Stop 246671



Georges Quay Stop 240921

George's Quay, Cork

Cork City Library Stop 241461

Grand Parade, Cork

Washington Street Stop 244161

11 Washington Street, Cork

Lancaster Quay Stop 240521

Ucc Western Rd Stop 240531

1 University Place, Cork

Western Terrace Stop 240541

Castlewhite Apts Stop 240551

Anneville, Cork

Western Gateway Ucc Stop 240561

Wilton Road Stop 240571

Model Farm Road Stop 213801

Bishopstown Park Stop 241781

Farranlea Park Stop 241791

Dept Of Agriculture Stop 241801

Parkway Drive Junc Stop 241811

Model Farm Park Stop 244241

Edenhall Stop 247231

Inchaggin Stop 244431

Hilton Estate Stop 231601

Inniscarra View Stop 232461

1 Rosewood, Ballincollig

Rosewood Stop 244191

22 Rosewood, Ballincollig

Fr Sexton Park Stop 244201

Fr. Sexton Park, Ballincollig

Ballincollig Stop 357741

Main Street, Ballincollig

Ballincollig Town C Stop 232421

Stop No. 232471

Westcliffe, Ballincollig

City West Mews Stop 244221

Coolroe Heights Stop 244341

4 Avoncourt, Ballincollig

Old Quarry Stop 244351

Westcourt, Ballincollig

Aylsbury Stop 244231

Ballincollig West (Classes Lake Westbound)

Ballincollig Stop 247981

Emc Terminus Stop 245791

Grange Manor Stop 246621

Ovens Stop 246671

Direction: Grange Road Terminus - Fernlea Terminus

80 stops

[VIEW LINE SCHEDULE](#)

- Ovens Stop 246671
- Grange Manor Stop 246681
- Killumney Cross Stop 246691
- Emc Terminus Stop 245791
- Ballincollig Stop 247991
- Classes Lake Stop 299361
The Mews, Ballincollig
- Aylsbury Stop 244271
- Old Quarry Stop 245811
Westcourt, Ballincollig
- Coolroe Heights Stop 245801
- City West Mews Stop 244281
- Barrys Road Junc Stop 232481
Westcliffe, Ballincollig
- Ballincollig (Shopping Centre)
- Ballincollig Town C Stop 244291
The Square, Ballincollig
- Fr Sexton Park Stop 244301
Main Street, Ballincollig
- Rosewood Stop 244311
Poulavone, Ballincollig
- Model Farm Road Stop 244321
- Hilton Estate Stop 244451
- Inchaggin Stop 244331
- Carrigrohane Road Stop 246441
- Lyndwood Estate Stop 241861
- Ida Model Farm Stop 233531
- Dept Of Agriculture Stop 241901
- Farranlea Park Stop 241881

220 bus Time Schedule

Grange Road Terminus - Fernlea Terminus Route

Timetable:

Sunday	24 hours
Monday	24 hours
Tuesday	24 hours
Wednesday	24 hours
Thursday	24 hours
Friday	24 hours
Saturday	24 hours

220 bus Info

Direction: Grange Road Terminus - Fernlea Terminus

Stops: 80

Trip Duration: 72 min

Line Summary: Ovens Stop 246671, Grange Manor Stop 246681, Killumney Cross Stop 246691, Emc Terminus Stop 245791, Ballincollig Stop 247991, Classes Lake Stop 299361, Aylsbury Stop 244271, Old Quarry Stop 245811, Coolroe Heights Stop 245801, City West Mews Stop 244281, Barrys Road Junc Stop 232481, Ballincollig (Shopping Centre), Ballincollig Town C Stop 244291, Fr Sexton Park Stop 244301, Rosewood Stop 244311, Model Farm Road Stop 244321, Hilton Estate Stop 244451, Inchaggin Stop 244331, Carrigrohane Road Stop 246441, Lyndwood Estate Stop 241861, Ida Model Farm Stop 233531, Dept Of Agriculture Stop 241901, Farranlea Park Stop 241881, Bishopstown Park Stop 241921, Dennehy's Cross Junc Stop 241911, Dennehy's Cross Stop 240081, Victoria Cross Stop 240091, Western Road Stop 240101, Castlewhite Apts Stop 240111, Ucc Gaol Cross Stop 255091, University College Stop 240121, Mardyke Walk Stop 240131, Presentation College Stop 240141, Mercy Hospital Stop 240681, Grand Parade Stop 241481, South Mall Stop 242051, Cork City Hall Stop 250841, Southern Road Stop 241221, Douglas Road Stop 241231, Laurel Grove Stop 241241, Cross Douglas Road Stop 235971, Woolharra Park Stop 241251, Ardfallen Stop 241261, Endsleigh Estate Stop 241271, Clermont Avenue Stop 241281, Douglas East Stop 231941, The Paddocks Stop 244971, Maryborough Hill Stop 246981, Lissadell Stop 245321, Broadale Stop 245331, Johnstown Stop 245821, Carrig Na Curra Stop 233961, Herons Wood Stop 244981, Cork Road Stop 245011, Cork Road Clinic Stop 245021, Carrigaline Church Stop 245031, Carrigaline Stop 231471, Kilmoney Rd Lower Stop 232661, Kilmoney Abbey View Stop 245041, Lower Clevedon Stop 245051, Kilmoney Road Upper Stop 245061,

Bishopstown Park Stop 241921

Dennehys Cross Junc Stop 241911

Dennehy's Cross Stop 240081

Victoria Cross Stop 240091

Western Road Stop 240101

Castlewhite Apts Stop 240111

Ucc Gaol Cross Stop 255091

University College Stop 240121

Mardyke Walk Stop 240131

Presentation College Stop 240141

Mercy Hospital Stop 240681

Broad Street, Cork

Grand Parade Stop 241481

Grand Parade, Cork

South Mall Stop 242051

87 South Mall, Cork

Cork City Hall Stop 250841

Southern Road Stop 241221

Thomond Square, Cork

Douglas Road Stop 241231

Laurel Grove Stop 241241

Cross Douglas Road Stop 235971

Woolharra Park Stop 241251

Knockrea Park Douglas Road, Cork

Ardfallen Stop 241261

Endsleigh Estate Stop 241271

Clermont Avenue Stop 241281

Douglas East Stop 231941

Douglas East, Cork

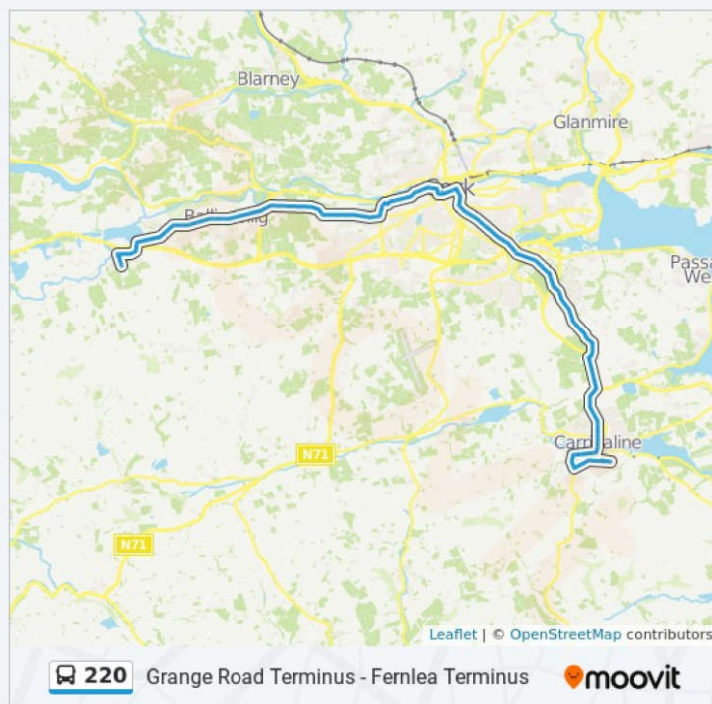
The Paddocks Stop 244971

Maryborough Hill Stop 246981

Lissadell Stop 245321

Broadale Stop 245331

Clevedon Gardens Stop 245071, Liosbourne Stop 232811, Ferney Road Stop 245871, Forrest Hills Stop 246711, Carrigaline Ind Est Stop 234671, Kilnagleary Rd Stop 233691, Royal Cork Yacht C Stop 245081, The Grand Stop 245091, Buckleys Pub Stop 245101, Crosshaven Stop 231841, Brightwater Stop 245881, Myrtleville Cross Stop 233561, Forge Cross Stop 211881, Fountainstown Stop 232131, Fountainstown Stop 245161, Forge Cross Stop 245171, Crosshaven Rfc Stop 245181, Brightwater Stop 245891, Crosshaven Stop 245111



Maryborough Hill, Cork

Johnstown Stop 245821

Carrig Na Curra Stop 233961
R611, Carrigaline

Hérons Wood Stop 244981

Cork Road Stop 245011
Glenwood, Carrigaline

Cork Road Clinic Stop 245021

Carrigaline Church Stop 245031

Carrigaline Stop 231471
Owenabue Car Park, Carrigaline

Kilmoney Rd Lower Stop 232661
Maurland, Carrigaline

Kilmoney Abbey View Stop 245041
Abbey View, Carrigaline

Lower Clevedon Stop 245051

Kilmoney Road Upper Stop 245061

Clevedon Gardens Stop 245071
Cleveden Gardens, Carrigaline

Liosbourne Stop 232811
Liosbourne, Carrigaline

Ferney Road Stop 245871

Forrest Hills Stop 246711
Forest Hill, Ireland

Carrigaline Ind Est Stop 234671

Kilnagleary Rd Stop 233691

Royal Cork Yacht C Stop 245081

The Grand Stop 245091

Buckleys Pub Stop 245101

Crosshaven Stop 231841
Hayes' Hill, Ireland

Brightwater Stop 245881
Drake's Point, Ireland

Myrtleville Cross Stop 233561

Forge Cross Stop 211881

Fountainstown Stop 232131

Fountainstown Stop 245161

Forge Cross Stop 245171

Crosshaven Rfc Stop 245181

Brightwater Stop 245891

Crosshaven Stop 245111

Hayes' Hill, Ireland

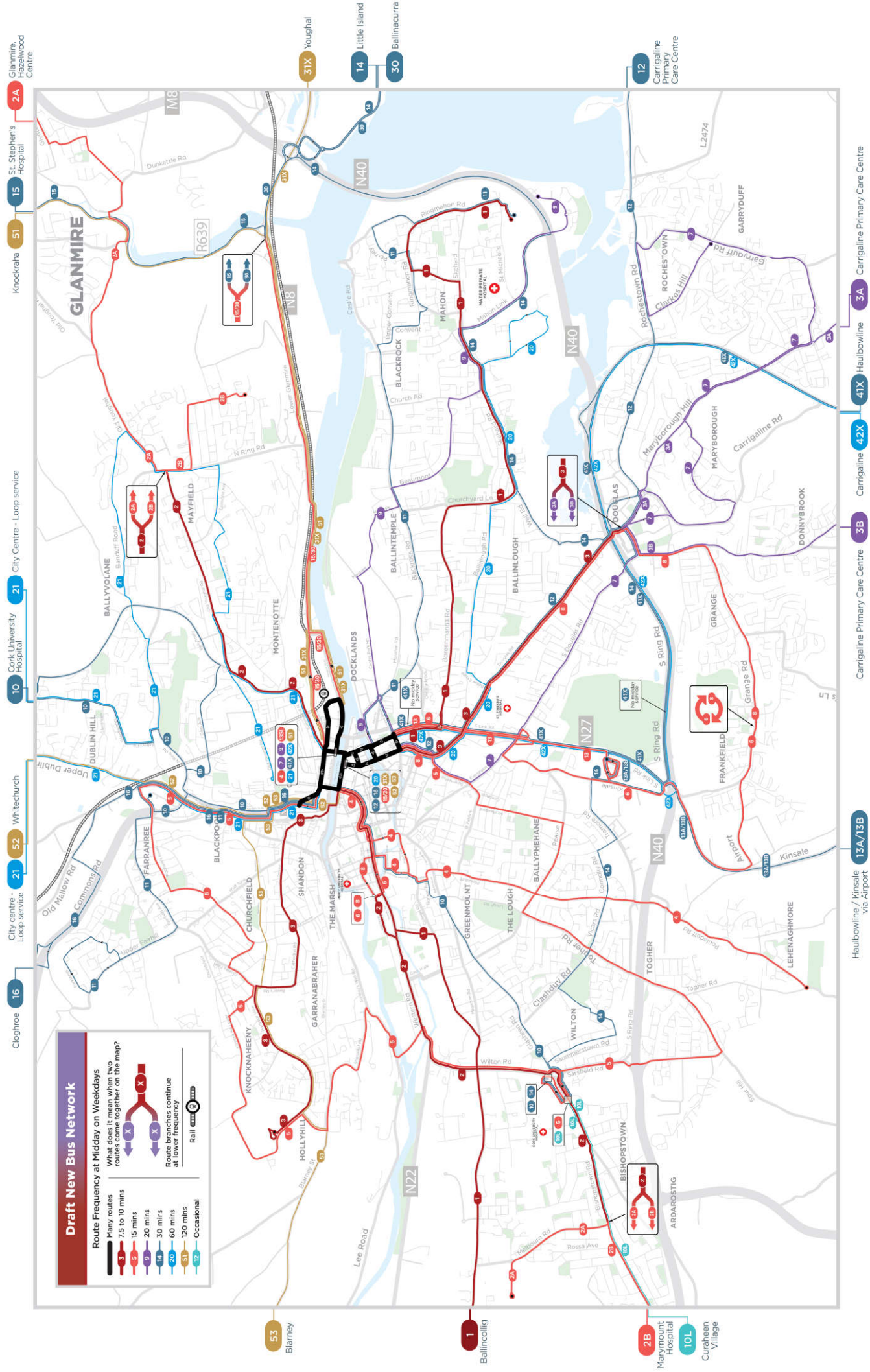
11 APPENDIX C – BUS CONNECTS CORK

Bus routes in your local area

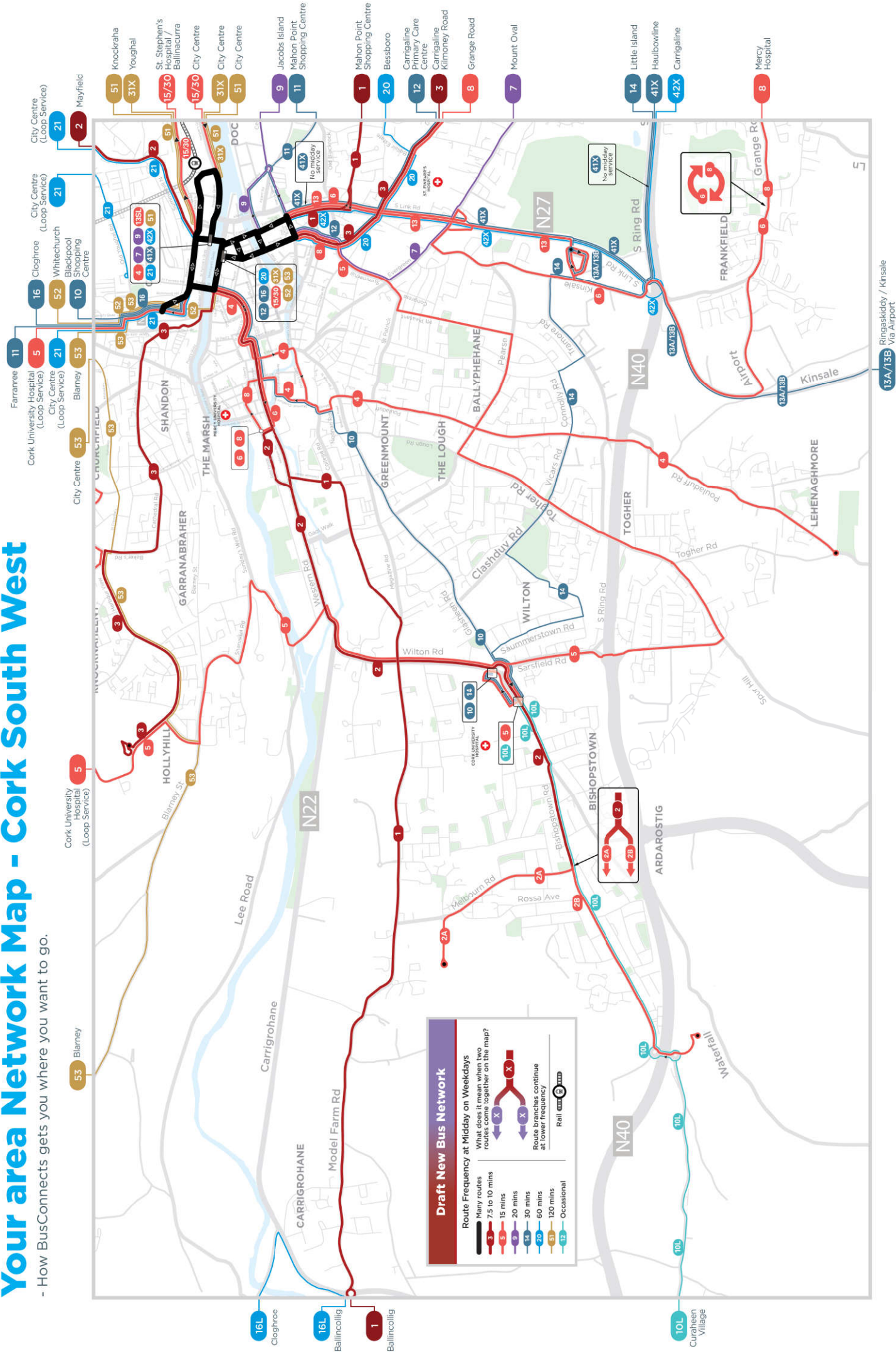
Route	From	Via	To	How Often
Core Route 1	Ballincollig	Model Farm Road (MTU) - College Road (UCC) - St. Patrick's Street - City Hall - Boreenmanna Road - Skehard Road	Mahon Point Shopping Centre	Every 10 mins
1A	Ballincollig, Castle Road	Ballincollig Main Street - Model Farm Road (MTU) - College Road (UCC) - St. Patrick's Street - City Hall - Boreenmanna Road - Skehard Road	Mahon Point Shopping Centre	Every 20 mins
1B	Ovens (Dell EMC)	Ballincollig Main Street - Model Farm Road (MTU) - College Road (UCC) - St. Patrick's Street - City Hall - Boreenmanna Road - Skehard Road	Mahon Point Shopping Centre	Every 20 mins
Core Route 2	Curraheen Road	Bishopstown Road - CUH - Western Road - St. Patrick's Street - MacCurtain Street - Old Youghal Road	Mayfield	Every 7.5 mins
2A	Munster Technological University	Bishopstown Road - CUH - Western Road - St. Patrick's Street - MacCurtain Street - Old Youghal Road - Church Hill	Glanmire, Hazelwood Centre	Every 15 mins
2B	Marymount Hospital	Curraheen Road - Bishopstown Road - CUH - Western Road - St. Patrick's Street - MacCurtain Street - Old Youghal Road - Boherboy Road	Ashmount	Every 15 mins
Core Route 3	Carrigaline Kilmoney Road	Carrigaline Main Street - alternating Donnybrook Hill or Maryborough Hill - Douglas Village - Douglas Road - City Hall - Bus Station - Cathedral Road	Apple	Every 10 mins
3A	Carrigaline Primary Care Centre	Ferney Road - Kilmoney Road Lower - Carrigaline Main Street - Maryborough Road - Douglas Village Shopping Centre - Douglas Road - City Hall - Bus Station - Cathedral Road	Apple	Every 20 mins
3B	Carrigaline Primary Care Centre	Fuscia Avenue - Kilmoney Road Lower - Carrigaline Main Street - Ballinrea Road - Donnybrook Hill - Douglas Village Shopping Centre - Douglas Road - City Hall - Bus Station - Cathedral Road	Apple	Every 20 mins
4	Lehenaghmore	Pouladuff Road - Green Street - Gregg Road - St. Patrick Street - Merchant's Quay	Kent Station	Every 15 mins
5	Cork University Hospital	Wilton Road - Victoria Cross - Shanakiel Road - Apple - Kilmore Heights - Popham's Road - Blackpool Shopping Centre - Bridge Street - Bus Station - City Hall - Connolly Road - Togher Road - Sarsfield Road (Loop Service)	Cork University Hospital	Every 15 mins
6	Frankfield	Kinsale Road - South Link Road - City Hall - Bus Station - Saint Patrick Street - Western Road	Mercy Hospital	Every 15 mins
7	Mount Oval	Rochestown Road - Garryduff Road - Maryborough Hill - South Douglas Road - City Hall - Bus Station	Kent Station	Every 20 mins
8	Grange Road	Douglas Village Shopping Centre - Douglas Road - City Hall - Bus Station - St. Patrick's Street - Western Road	Mercy Hospital	Every 15 mins
9	Jacobs Island	Mahon Point Shopping Centre - Skehard Road - Beaumont Drive - Centre Park Road - Bus Station	Kent Station	Every 20 mins
10	Cork University Hospital	Glasheen Road - Gregg Road - St. Patrick's Street - Merchant's Quay - Kent Station - MacCurtain Street - North Ring Road - Glenheights Road - Ballyhooly Road - Glen Avenue <i>*Occasional trips will extend to Curraheen Village</i>	Blackpool Shopping Centre	Every 30 mins
11	Mahon Point Shopping Centre	Ringmahon Road - Saint Luke's Home - Blackrock - Blackrock Road - Bus Station - Kent Station - MacCurtain Street - Blackpool Shopping Centre - Fairfield Avenue - Upper Fairhill - Parklands Drive	Farranree	Every 30 mins
12	Carrigaline Primary Care Centre	Crosshaven Road - Carrigaline Main Street - N28 - Monkstown - Passage West - Rochestown Road - Douglas Village Shopping Centre - Douglas Road - City Hall <i>*Occasional trips will route via Carrigmahon Hill or St Peter's School during the day</i>	City Centre	Every 30 mins
Core Route 13	Black Ash Park and Ride	South Link Road - City Hall - Bus Station	Kent Station	Every 15 mins
13	Black Ash Park and Ride	South Link Road - City Hall - Bus Station	Kent Station	Every 30 mins
13A	Haulbowline	Coolmore Cross - Shanbally - Carrigaline - Ballygarvan - Cork Airport - Kinsale Road - South Link Road - Black Ash Park and Ride - Bus Station	Kent Station	Every 60 mins
13B	Kinsale	Belgooly - Riverstick - Cork Airport - Kinsale Road - South Link Road - Black Ash Park and Ride - Bus Station	Kent Station	Every 60 mins
14	Cork University Hospital	Summerstown Road - Clashduv Road - Tramore Road - Black Ash Park and Ride - South Ring - Douglas Village Shopping Centre - Well Road - Skehard Road - Mahon Point Shopping Centre	Little Island	Every 30 mins
15	St. Stephen's Hospital	Sallybrook - Glanmire - Lower Glanmire Road	City Centre	Every 30 mins
15 L	Clonmel	Mitchelstown - Fermoy - Rathcormack - Watergrasshill - St. Stephen's Hospital - Sallybrook - Glanmire - Lower Glanmire Road	City Centre	Every 60 mins
16	Cloghroe	Tower - Blarney - Blackpool Shopping Centre - MacCurtain Street	City Centre	Every 30 mins
16 L	Ballincollig	Carrigrohane - Cloghroe Road - Cloghroe - Tower - Blarney - Blackpool Shopping Centre - MacCurtain Street	City Centre	Every 60 mins
20	Bessboro	Skehard Road - Ballinlough Road - Southern Road - City Hall	City Centre	Every 60 mins
21	City Centre	Kent Station - Summerhill North - Dillons Cross - Collin's Barracks - Dillon's Cross - Old Youghal Road - Murmount Avenue - Colmcille Avenue - Banduff Road - North Ring Road - Lower Dublin Hill - Dublin Street - MacCurtain Street (Loop Service)	City Centre	Every 60 mins
30	Ballinacurra	Midleton - Carrigtwohill - Little Island - Lower Glanmire Road	City Centre	Every 30 mins
31X	Youghal	Killeagh - Castlemartyr - Midleton <i>*Occasional trips will serve Ardmore, Ladysbridge and Mogelly</i>	City Centre	Every 120 mins
32	Ballycotton	Garryvoe - Cloyne - Ballinacurra - Midleton	Midleton Train Station	Every 120 mins
33	Trabolgan	Whitegate - Ballinacurra - Midleton	Midleton Train Station	Every 120 mins
34	Carrignafoy	Spy Hill - Cobh Train Station - Norwood Park - Ballynoe Road - Carrigaloe Cross River Ferry	Carrigaloe Cross River Ferry	Every 30 mins
Core Route 40	Crosshaven	Carrigaline - Ringaskiddy	Haulbowline	Every 30 mins
40A	Camden Fort	Crosshaven - Carrigaline - Ringaskiddy	Haulbowline	Every 60 mins
40B	Fountainstown	Crosshaven - Carrigaline - Ringaskiddy	Haulbowline	Every 60 mins
41X	Haulbowline	Ringaskiddy - Carr's Hill - South Link Road - City Hall - Bus Station	Kent Station	Peak Only
42X	Carrigaline	Carr's Hill - South Link Road - City Hall - Bus Station	Kent Station	Every 60 mins
51	Knockraha	Glanmire - Kent Station	City Centre	Every 120 mins
52	Whitechurch	Carrignavar - Dublin Pike - Thomas Davis Street - Merchant's Quay	City Centre	Every 120 mins
53	Blarney	Tower - Kerry Pike - Harbour View Road - Sun Valley Drive - Watercourse Road - Mac Curtain Street - Merchant's Quay	City Centre	Every 120 mins
81	Carrigaline Primary Care Centre	Carrigaline Main Street - Maryborough Road - Douglas Village Shopping Centre - Douglas Road - City Hall - Bus Station - St. Patrick's Street - College Road (UCC) - Model Farm Road (MTU) - Ballincollig Main Street	Ballincollig	Every 30-60 mins Midnight to 5:00am

*Midday frequency shown in table. Services may be more frequent in peak hours. Less frequent at weekends/evenings.

Cork Network Map



- How BusConnects gets you where you want to go.



12 APPENDIX D – CORK CITY DEVELOPMENT PLAN MAP

Table 16.9 Bicycle Parking Requirements

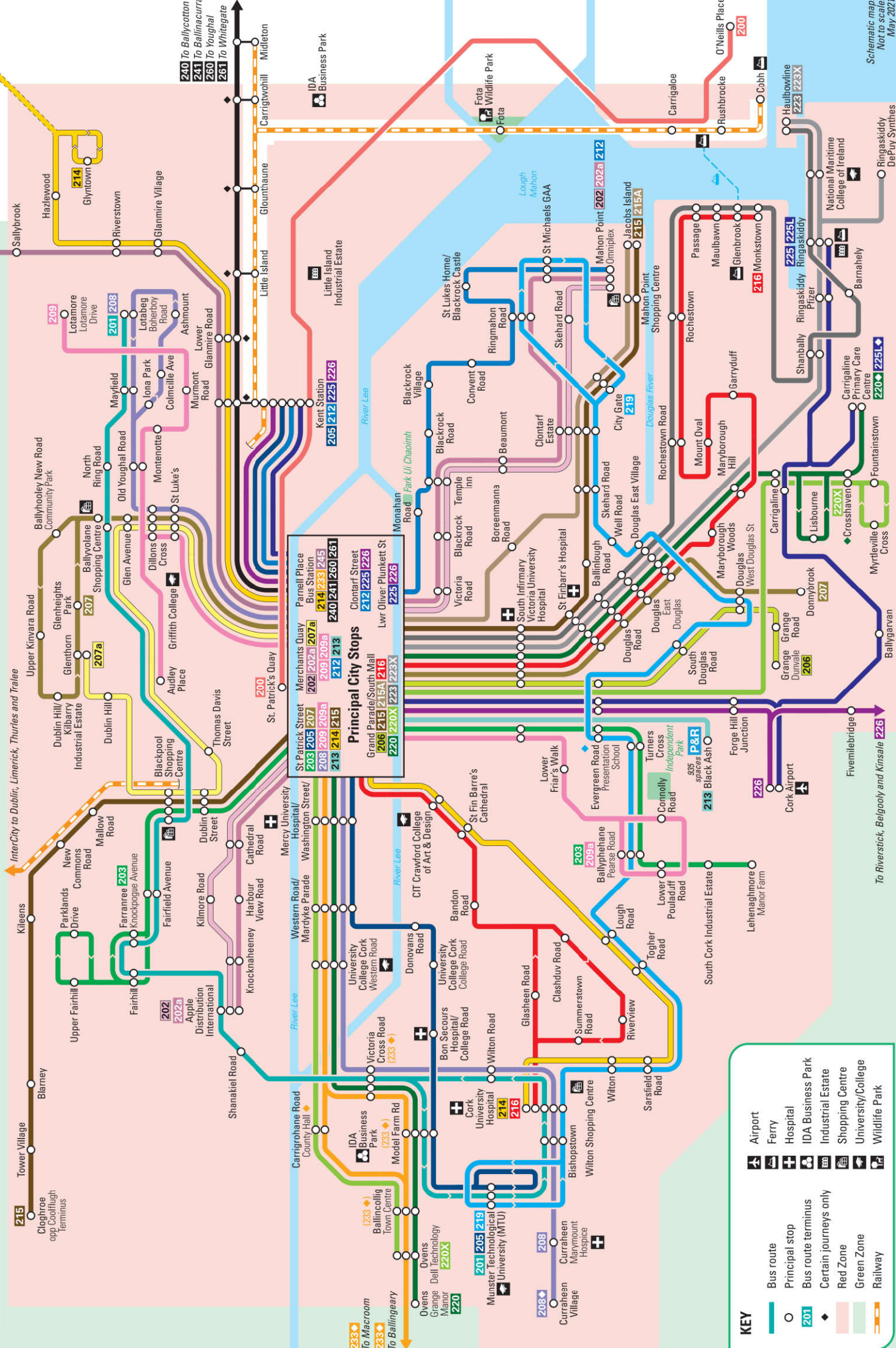
Land Use	Cycle Parking Requirement
Residential	
Standard Apartments	1 per unit in City Centre / Inner Urban Areas
	0.50 per unit in Suburbs
Student Apartments	0.5 per bed space
Retail	
	GFA = Gross Floor Area
Convenience (food) store	1 per 100m ² GFA
Shopping Centre	1 per 200m ² GFA
Non Food Retail	1 per 250m ² GFA
Retail Warehouses	1 per 250m ² GFA
Employment	
Retail Offices	1 per 250m ² GFA
General Offices	1 per 150m ² GFA
Business and Technology	1 per 200m ² GFA
Light Industry (and related Uses)	1 per 250m ² GFA
Warehousing and Distribution	1 per 500m ² GFA

Figure 12.1 – Bicycle Parking Requirements. Cork City Development Plan 2015-2021

Cork City Bus and Train services



TRANSPORT FOR IRELAND

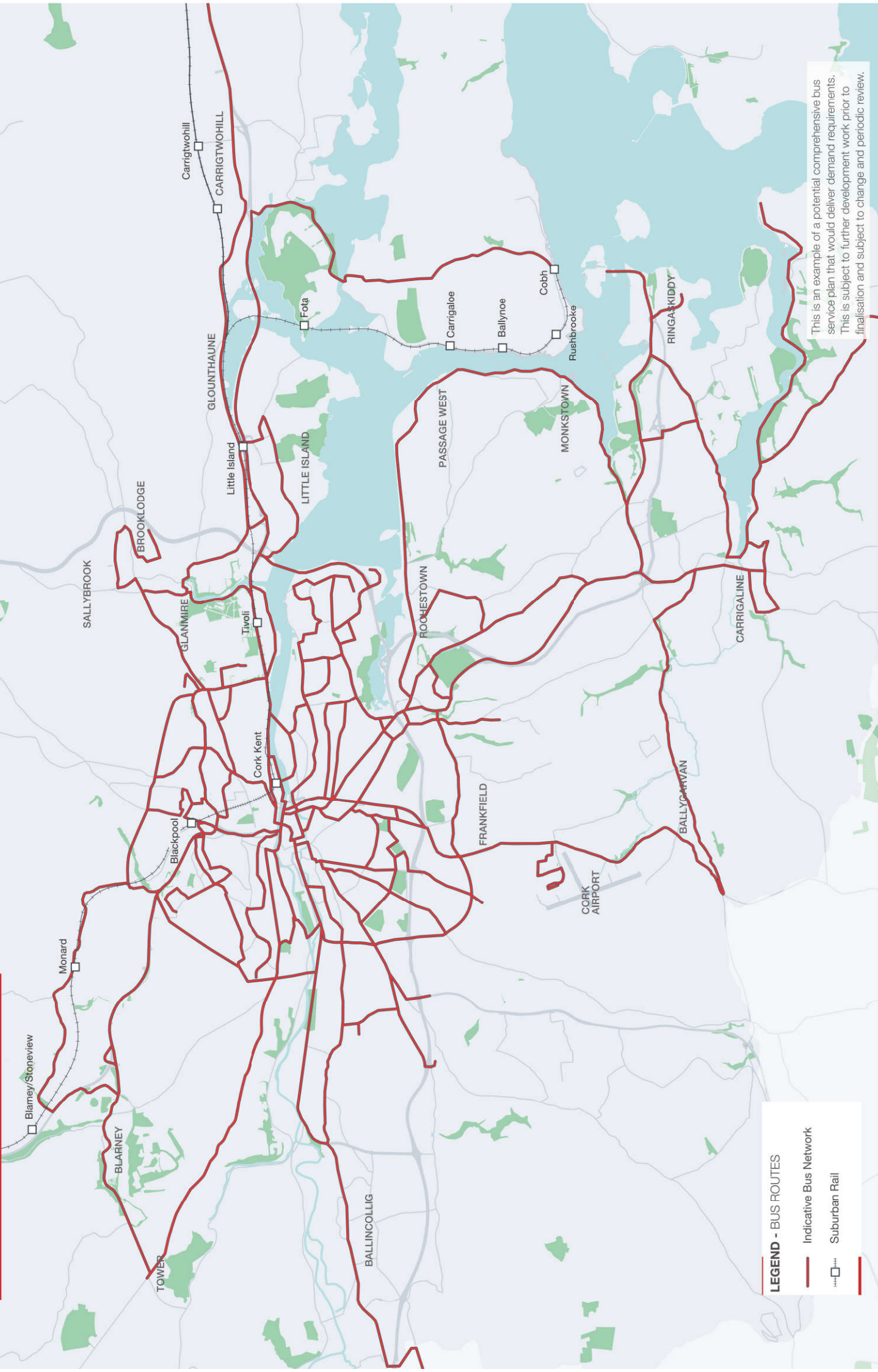


KEY

- Bus route
- Principal stop
- Bus route terminus
- Certain journeys only
- Red Zone
- Green Zone
- Railway
- Airport
- Ferry
- Hospital
- IDA Business Park
- Industrial Estate
- Shopping Centre
- University/College
- Wildlife Park

Schematic map.
Not to scale.
May 2021

BusConnects Route Map

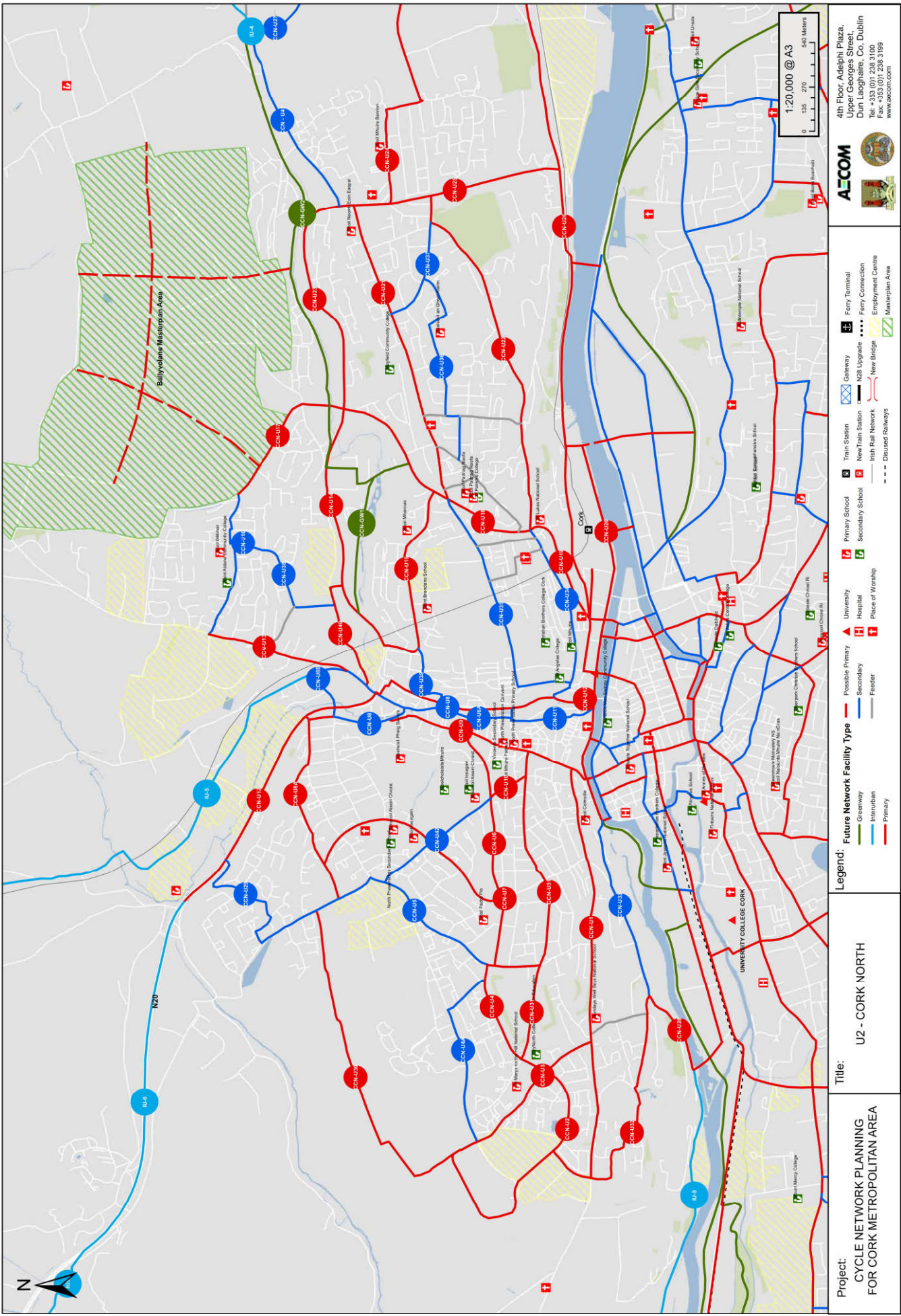


LEGEND - BUS ROUTES

- Indicative Bus Network
- Suburban Rail

This is an example of a potential comprehensive bus service plan that would deliver demand requirements. This is subject to further development work prior to finalisation and subject to change and periodic review.

Map U2 Proposed Future Network - Cork City North



Project:
CYCLE NETWORK PLANNING
FOR CORK METROPOLITAN AREA

Title:
U2 - CORK NORTH

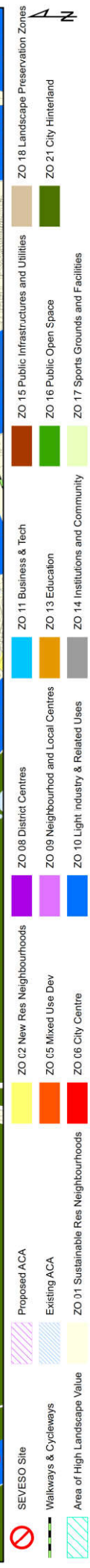
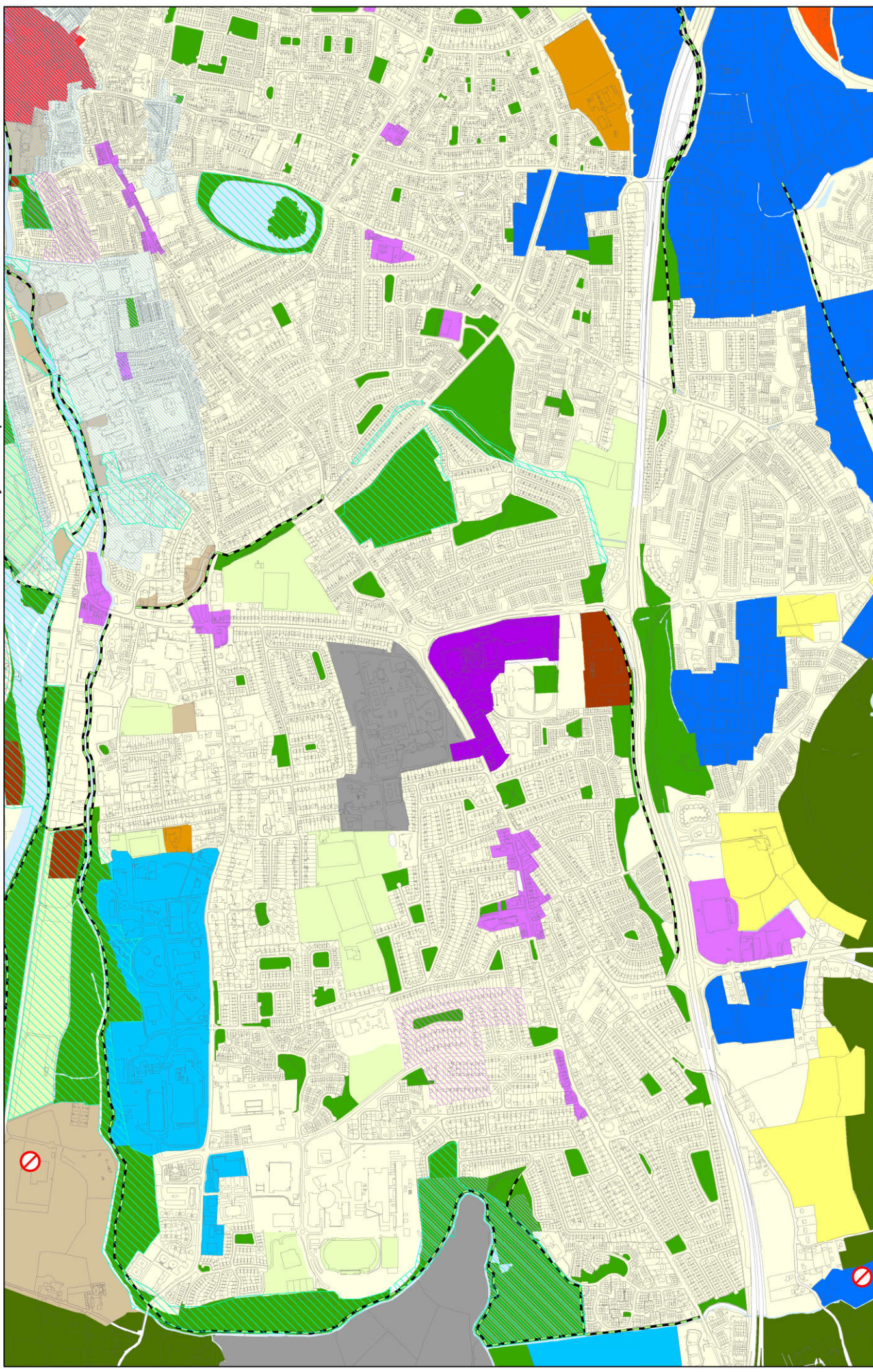
Legend:

- Future Network Facility Type**
- Primary
 - Secondary
 - Tertiary
 - Greenway
 - Interurban
- Future Network Facility Type**
- Primary School
 - Secondary School
 - University
 - Hospital
 - Place of Worship
 - Feeder
- Future Network Facility Type**
- Train Station
 - New Train Station
 - First Rail Network
 - Dismantled Railways
 - Gateway
 - NBS Upgrade
 - New Bridge
 - Ferry Terminal
 - Ferry Connection
 - Employment Centre
 - Masterplan Area



4th Floor, Adelphi Plaza,
Upper Georges Street,
Dun Laoghaire, Co. Dublin
Tel: +353 (0)1 238 3100
Fax: +353 (0)1 238 3199
www.aecom.com

13 APPENDIX E – DRAFT CCDP 2022-2028





OFFICES:

CORK

Carraig Mór House,
10 High Street,
Douglas Road,
Cork.

KERRY

HQ Tralee,
Abbey Street,
Tralee,
Kerry

Tel: +353 (0) 214840214

E: info@mhl.ie

MHL & Associates Consulting Engineers
Registration Number
311279

Visit us at:
www.mhl.ie
